

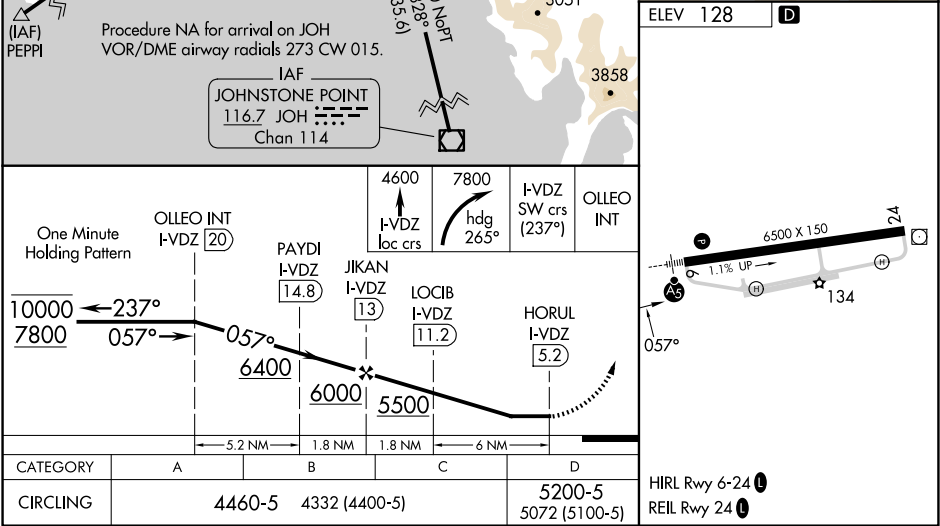
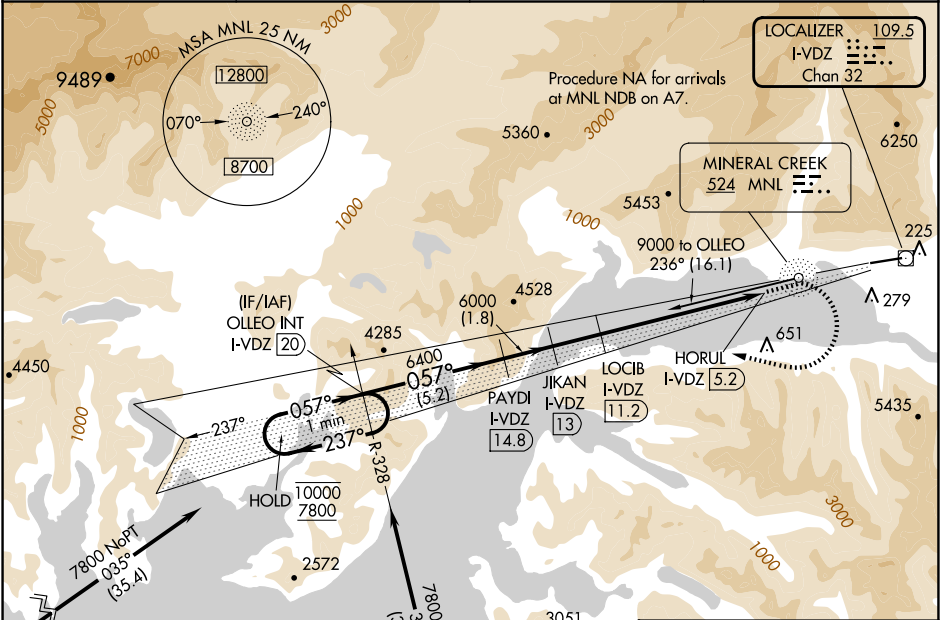
LOC/DME I-VDZ	APP CRS	Rwy Ldg TDZE	N/A
109.5	057°		N/A
Chan 32		Apt Elev	128

LDA-H

VALDEZ PIONEER FLD (VDZ) (PAVD)

DME required. RNP APCH-GPS. From PEPEI.		MISSED APPROACH: Climb on I-VDZ localizer course to 4600 then climbing right turn to 7800 on heading 265° and I-VDZ SW course (237°) to OLLEO INT/I-VDZ 20 DME and hold, continue climb-in-hold to 7800.
<div><div><div>▼</div><div>▲</div><div>❄</div></div><div>-10°C</div></div>	<div>Circling NA north of Rwy 6-24. Circling Rwy 24 NA at night. Rwy 24 helicopter visibility reduction below 1 SM NA. When local altimeter setting not received, use Cordova altimeter setting and increase all MDAs 1020 feet.</div>	

AWOS-3P	ANCHORAGE CENTER	JUNEAU RADIO	CTAF
118.8	119.3 269.4	122.2	122.9 0



AK, 07 AUG 2025 to 02 OCT 2025

AK, 07 AUG 2025 to 02 OCT 2025