

VORTAC APE	APP CRS	Rwy Idg	N/A
116.7	194°	TDZE	N/A
Chan 114		Apt Elev	868

VOR-A
FAIRFIELD COUNTY (LHQ)

DME or RADAR required.	MISSED APPROACH: Climb to 2000 then climbing left turn to 3000 direct APE VORTAC and hold.
When local altimeter setting not received, use Rickenbacker Intl altimeter setting and increase all MDAs 60 feet and visibility Cat C ¼ SM. Circling Rwy 28 NA at night. Rwy 28 helicopter visibility reduction below 1 SM NA.	

ASOS 118.375	COLUMBUS APP CON 134.0 279.6	CLNC DEL 121.65	UNICOM 122.725 (CTAF) 1
-----------------	---------------------------------	--------------------	----------------------------

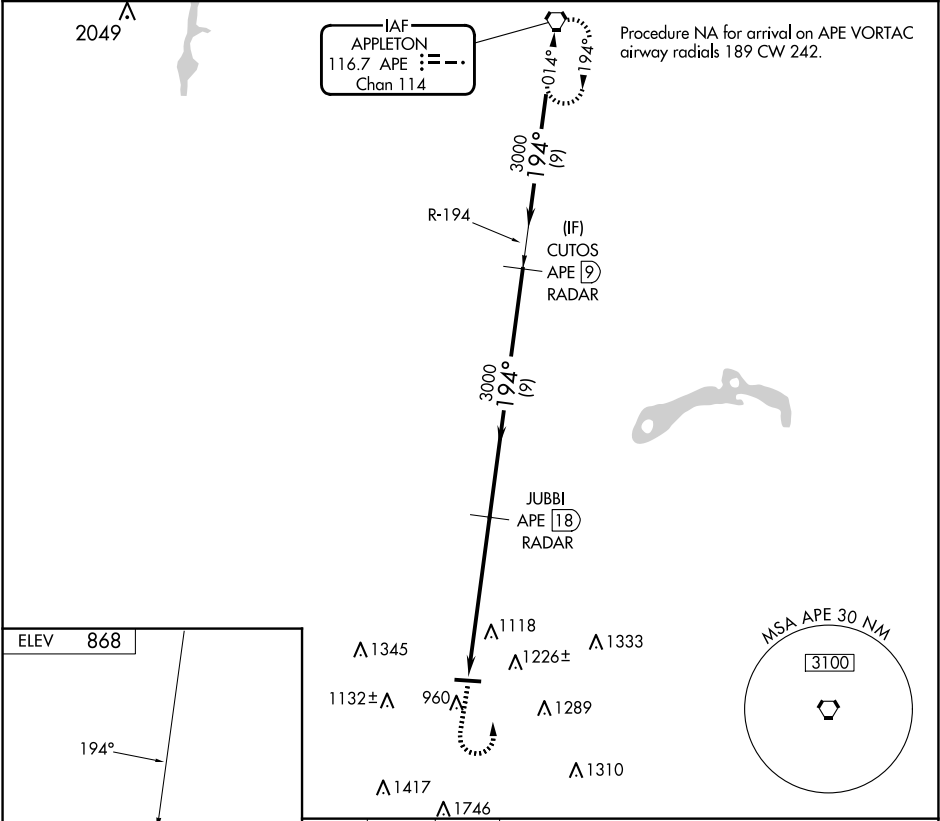


Diagram showing the layout of REIL Rwy 10 and 28. The runway is 5003 x 75 feet. A taxiway is shown between the runways. A star symbol is located near the end of the runway.

2000

3000

APE

JUBBI APE RADAR

CUTOS APE RADAR

APE VORTAC

Profile view diagram showing the climb gradient and altitude. The climb gradient is 194°. The altitude is 3000 feet. The distance markers are 5.9 NM, 9 NM, and 9 NM.

REIL Rwy 10 and 28

MIRL Rwy 10-28

FAF to MAP 5.9 NM					
Knots	60	90	120	150	180
Min:Sec	5:54	3:56	2:57	2:22	1:58

CATEGORY	A	B	C	D
CIRCLING	1500-1 632 (700-1)	1540-1 672 (700-1)	1620-2¼ 752 (800-2¼)	NA