

WAAS CH 40408 W17A	APP CRS 165°	Rwy Idg TDZE Apt Elev	5002 607 610
--	------------------------	-----------------------------	---

RNAV (GPS) RWY 17

ROBERT SIBLEY (SZY)

RNP APCH - GPS

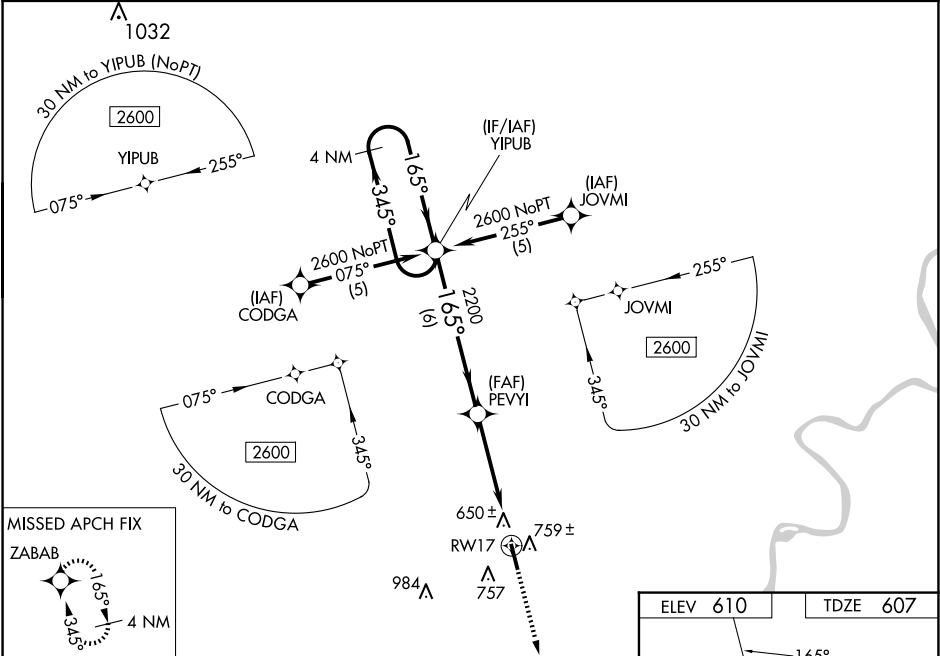
▼

NA

Baro-VNAV NA when using Jackson Rgnl alimeter setting. For uncompensated Baro-VNAV systems, LNAV/VNAV NA below -16°C or above 47°C. Helicopter visibility reduction below 1 SM NA. When local alimeter setting not received, use Jackson Rgnl alimeter setting: increase LPV DA to 959 and all visibilities ¼ SM, increase LNAV/VNAV DA to 1153 and all visibilities ¼ SM; increase all MDAs 100 feet and LNAV visibility Cat C and Circling visibility Cat D ¼ SM, and LNAV visibility Cat D ½ SM. Straight-in Rwy 17 NA at night, Circling Rwy 17, 35 NA at night.

MISSED APPROACH:
Climb to 2600 direct ZABAB and hold.

AWOS-3 118.425	MEMPHIS CENTER 124.35 318.1	UNICOM 122.7 (CTAF) 0
--------------------------	---------------------------------------	---------------------------------



4 NM Holding Pattern		VGSI and RNAV glidepath not coincident (VGSI Angle 3.00°/TCH 29°).		2600	ZABAB
2600		PEVYI		RWY 17	
GP 3.00° TCH 30		2200			
6 NM		4.9 NM			
CATEGORY	A	B	C	D	
LPV DA	861-1		254 (300-1)		
LNAV/VNAV DA	1055-1¾		448 (500-1¾)		
LNAV MDA	1020-1 413 (500-1)		1020-1¼ 413 (500-1¼)		
CIRCLING	1060-1 450 (500-1)	1080-1 470 (500-1)	1080-1½ 470 (500-1½)	1300-2¼ 690 (200-2¼)	

