

APP CRS	Rwy Idg	7001
094°	TDZE	76
	Apt Elev	76

RNAV (GPS) RWY 9
BROOKSVILLE-TAMPA BAY RGNL (BKV)

RNP APCH.

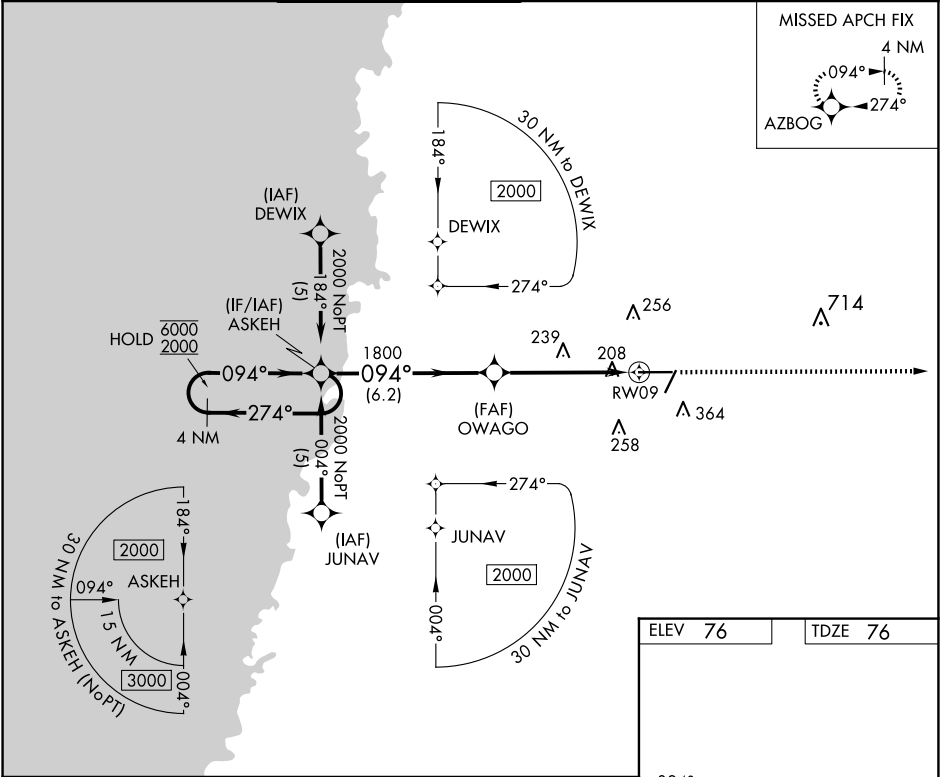
⚠ For uncompensated Baro-VNAV systems, LNAV/VNAV NA below -15°C or above 48°C.
For inop ALS increase LNAV Cat D visibility to 1¼ SM.

MALSR

AS

MISSED APPROACH: Climb to 2000 direct AZBOG and hold.

ASOS 134.725	TAMPA APP CON 125.3 316.05	BROOKSVILLE TOWER ★ 118.55 (CTAF) 0	GND CON 121.4	CLNC DEL 119.125 (When twr closed)	UNICOM 123.0
-----------------	-------------------------------	---	------------------	--	-----------------



4 NM Holding Pattern

ASKEH

6000

2000

GP 3.00° TCH 57

274°

094°

094°

1800

OWAGO

1800

6.2 NM

4 NM

1.2 NM

RW09

2000

AZBOG

*LNAV only.

*1.2 NM to RW09

ELEV 76

TDZE 76

094°

AS

7001 X 150

TWR/BCN

27

CATEGORY	A	B	C	D
LNAV/VNAV	DA	507-1	431 (500-1)	
LNAV MDA	500-¾	424 (500-¾)		500-1 424 (500-1)

MIRL Rwy 3-21 and 9-27 **0**

SE-3, 07 AUG 2025 to 04 SEP 2025

SE-3, 07 AUG 2025 to 04 SEP 2025