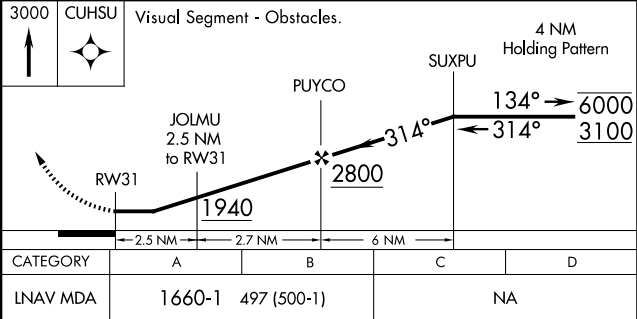
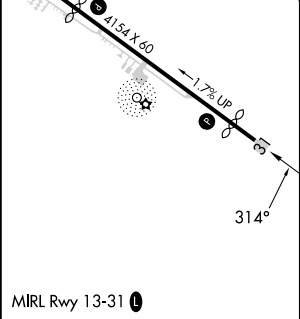
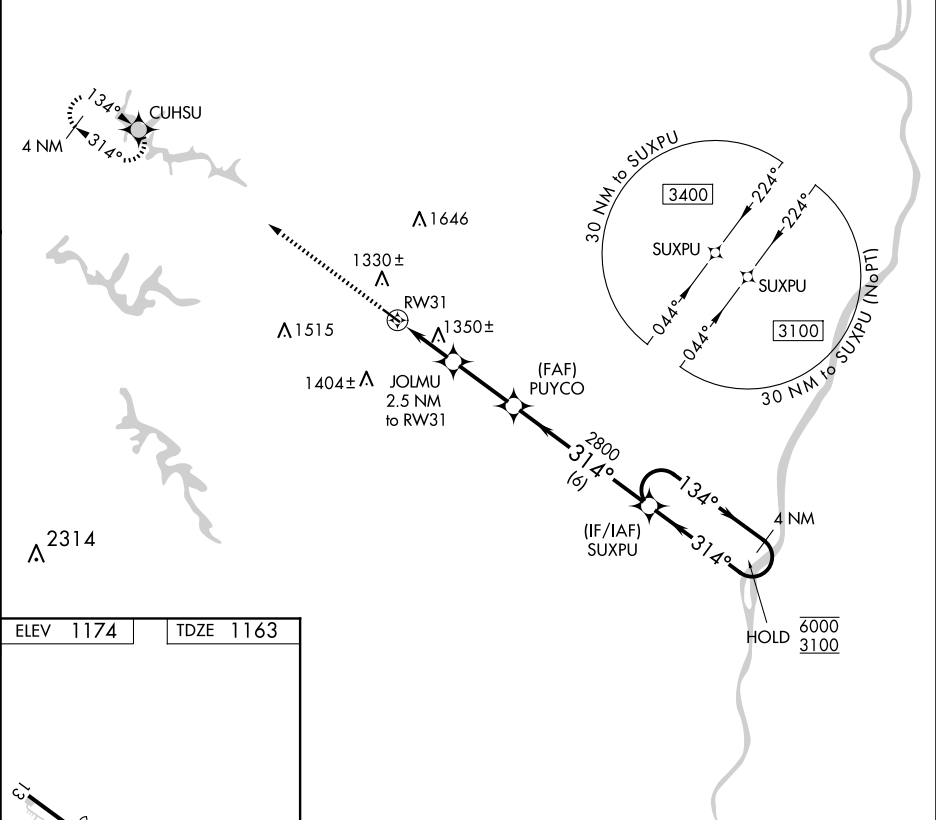


APP CRS	Rwy Idg	3744
314°	TDZE	1163
	Apt Elev	1174

RNAV (GPS) RWY 31

HARRISON COUNTY (8G6)

RNP APCH.		MISSED APPROACH: Climb to 3000 direct CUHSU and hold.
▼ ▲ NA	Rwy 31 helicopter visibility reduction below 1 SM NA. Use Wheeling altimeter setting; when not received, use Washington altimeter setting and increase all MDA 40 feet. Procedure NA at night.	
HLG ASOS 127.375	CLEVELAND CENTER 126.95 239.30	UNICOM 122.8 (CTAF) 0



EC-2, 07 AUG 2025 to 04 SEP 2025

EC-2, 07 AUG 2025 to 04 SEP 2025