

WAAS CH 77715 W03A	APP CRS 025°	Rwy Idg TDZE Apt Elev	5350 198 198
--	------------------------	-----------------------------	---

RNAV (GPS) RWY 3

COLUMBIA COUNTY (1B1)

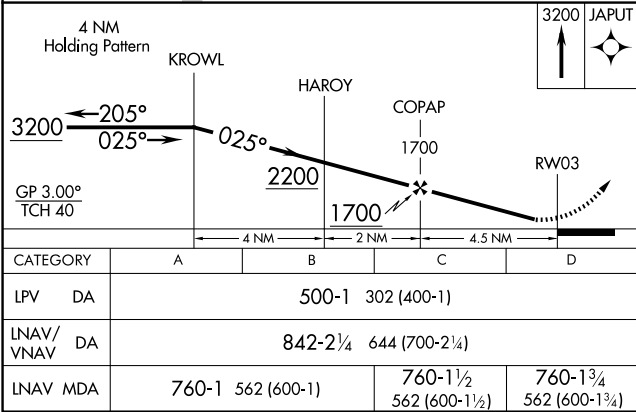
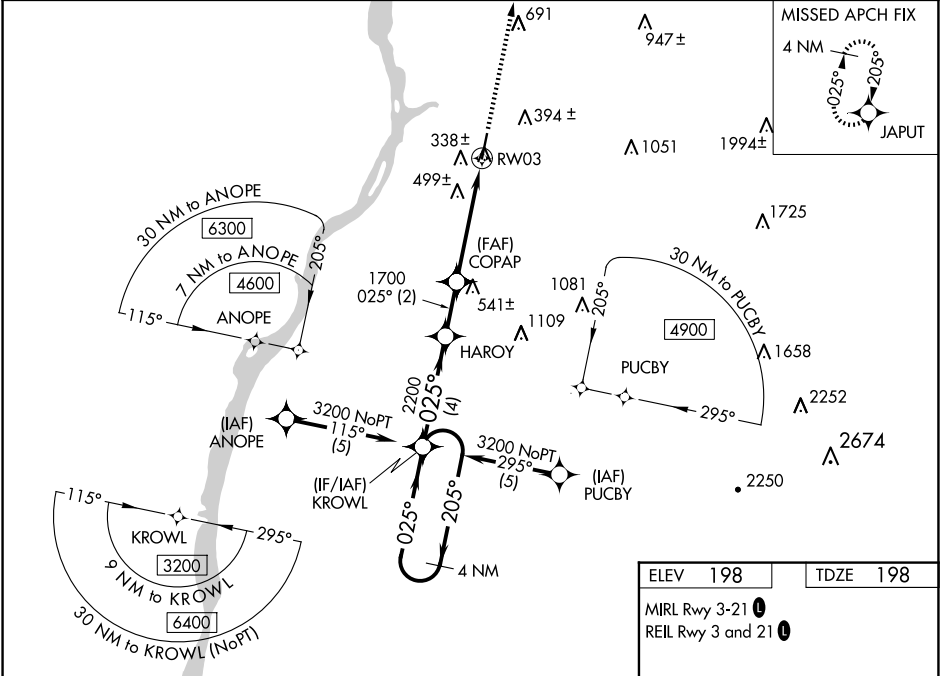
RNP APCH.

NA

Baro-VNAV NA when using Albany altimeter setting. For uncompensated Baro-VNAV systems, LNAV/VNAV NA below -15°C (5°F) or above 48°C (118°F). Rwy 3 helicopter visibility reduction below ¾ SM NA. When local altimeter setting not received, use Albany altimeter setting and increase all DA 76 feet and MDA 80 feet, increase LPV all Cats, LNAV/VNAV all Cats, LNAV Cats C/D visibility ¼ mile.

MISSED APPROACH: Climb to 3200 direct JAPUT and hold. continue climb-in-hold to 3200.

AWOS-3 133.525	ALBANY APP CON 132.825 307.2	UNICOM 123.05 (CTAF)
--------------------------	--	--------------------------------



ELEV 198	TDZE 198
MIRL Rwy 3-21	REIL Rwy 3 and 21

