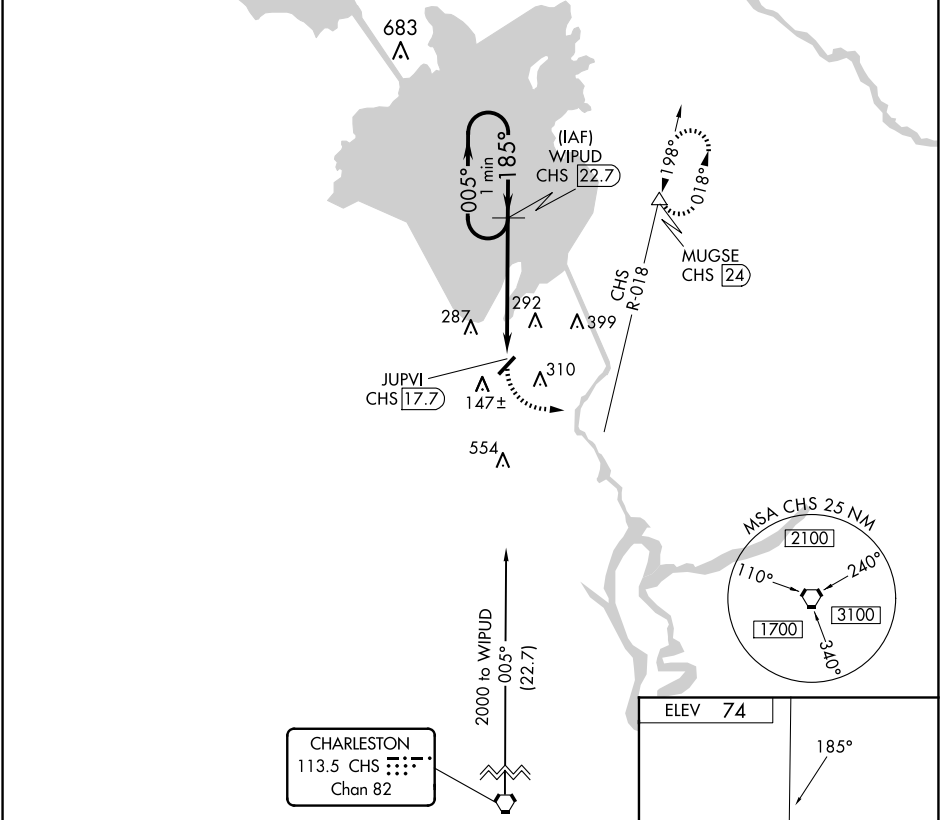


VORTAC CHS 113.5 Chan 82	APP CRS 185°	Rwy Idg TDZE Apt Elev	N/A N/A 74
--------------------------------	-----------------	-----------------------------	------------------

VOR/DME-A  
BERKELEY COUNTY (MKS)

Procedure NA at night. When local altimeter setting not received, use Charleston AFB/Intl altimeter setting: increase all MDA 60 feet and Cat C/D visibility ¼ SM. Helicopter visibility reduction below 1 SM NA.	MISSED APPROACH: Climbing left turn to 2000 via heading 050° and CHS R-018 to MUGSE/CHS 24 DME and hold.
---	--

AWOS-3 119.175	CHARLESTON APP CON 121.275 379.925	UNICOM 123.05 (CTAF)
-------------------	---------------------------------------	-------------------------



One Minute Holding Pattern		WIPUD CHS 22.7	2000 hdg 050°	CHS R-018	MUGSE
2000		005° 185°	185°	JUPVI CHS 17.7	
		5 NM			
CATEGORY	A	B	C	D	
CIRCLING	640-1	566 (600-1)	700-1¾ 626 (700-1¾)	860-2½ 786 (800-2½)	

