

WAAS  
CH **63210**  
**W05A**

APP CRS  
**050°**

Rwy Idg **4351**  
TDZE **74**  
Apt Elev **74**

RNAV (GPS) RWY 5

BERKELEY COUNTY (MKS)

RNP APCH-GPS.

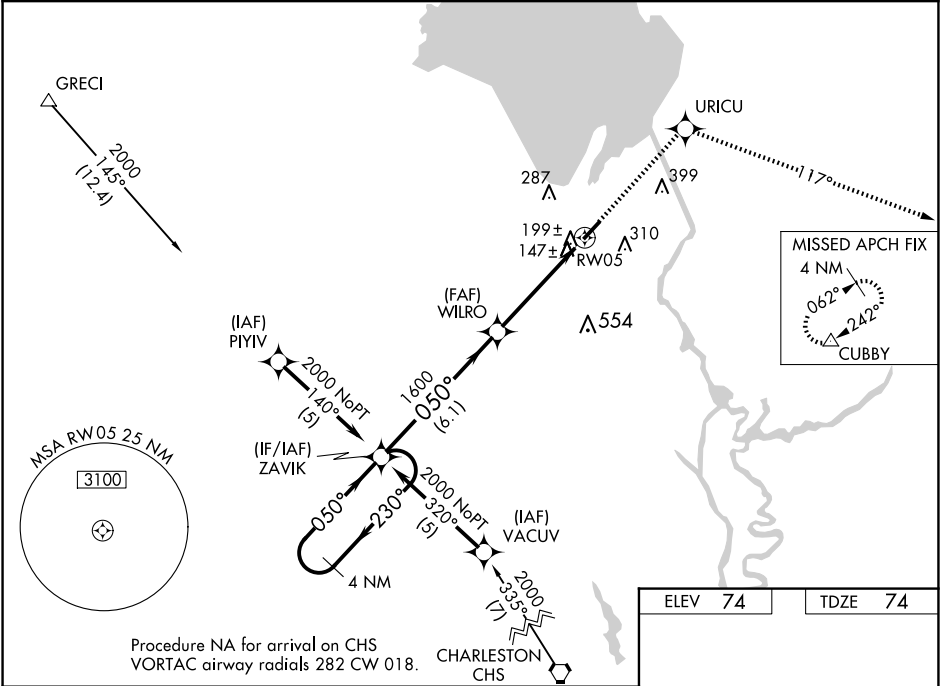
▼

▲ NA

Circling to Rwy 23 NA at night. Baro-VNAV NA when using Charleston AFB/Intl altimeter setting. For uncompensated Baro-VNAV systems, LNAV/VNAV NA below -15° C or above 54° C. Visibility reduction by helicopters NA. When local altimeter setting not received, use Charleston AFB/Intl altimeter setting: increase LPV DA to 451 feet; LNAV/VNAV DA to 513 feet; increase all MDA 60 feet and increase LNAV Cat C and Circling Cat C/D visibility ¼ SM. VDP NA when using Charleston AFB/Intl altimeter setting.

MISSED APPROACH: Climb to 2000 direct URICU and via 117° track to CUBBY and hold.

AWOS-3 <b>119.175</b>	CHARLESTON APP CON <b>121.275 379.925</b>	UNICOM <b>123.05 (CTAF) 0</b>
--------------------------	--	----------------------------------



4 NM Holding Pattern		ZAVIK	2000	URICU	CUBBY
			117° TRK		
GP 3.00° TCH 46					
2000 ← 230° 050° →		1600	* 1.3 NM to RW05	* LNAV only	
		1600			
		6.1 NM	3.3 NM	1.3 NM	
CATEGORY	A	B	C	D	
LPV DA	407-1¼		333 (400-1¼)		
LNAV/VNAV DA	469-1½		395 (400-1½)		
LNAV MDA	520-1	446 (500-1)	520-1¼ 446 (500-1¼)	520-1½ 446 (500-1½)	
CIRCLING	580-1 506 (600-1)	620-1 546 (600-1)	700-1¾ 626 (700-1¾)	860-2½ 786 (800-2½)	

