

WAAS CH 58121 W28A	APP CRS 277°	Rwy Idg TDZE 497 Apt Elev 501
--	------------------------	---

RNAV (GPS) RWY 28

THOMSON/McDUFFIE COUNTY (HQU)

RNP APCH

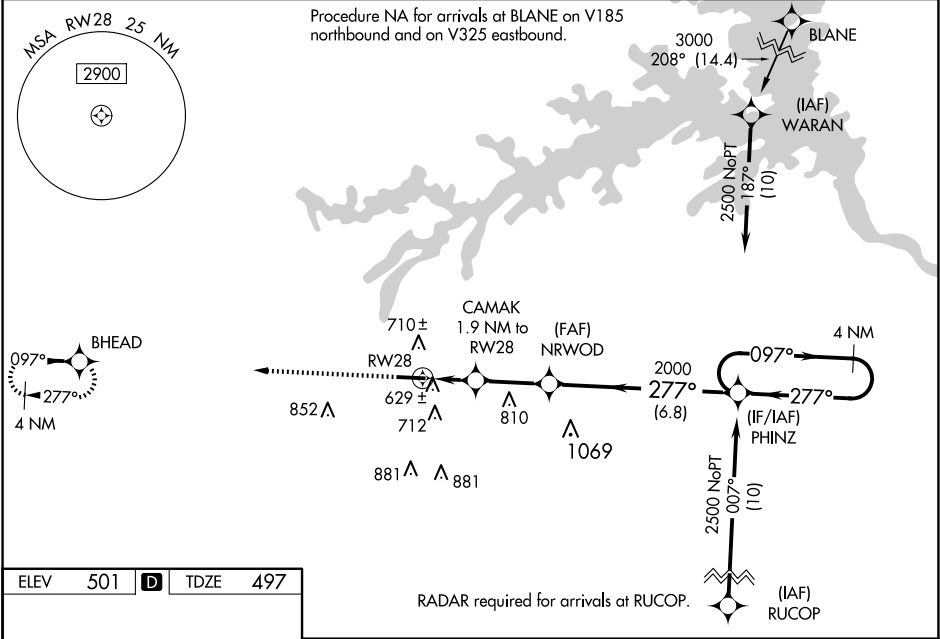
▼

▲

Baro-VNAV NA when using Daniel Field altimeter setting. For uncompensated Baro-VNAV systems, LNAV/VNAV NA below -15°C (5°F) or above 54°C (130°F). When local altimeter setting not received, use Daniel Field altimeter setting: increase LPV DA to 854 feet and visibility Cats A/B ½ SM, increase LNAV/VNAV DA to 877 feet; increase all MDAs 80 feet and increase visibility LNAV Cats C/D and Circling Cat C ¼ SM, and Circling Cat D ½ SM. Rwy 28 helicopter visibility reduction below ¼ SM NA.

MISSED APPROACH: Climb to 2500 direct BHEAD and hold.

AWOS-3 120.625	AUGUSTA APP CON ★ 124.45 270.3	UNICOM 122.8 (CTAF) 0
--------------------------	--	---------------------------------



ELEV 501	D	TDZE 497
----------	---	----------

2500 BHEAD

VGSI and RNAV glidepath not coincident (VGSI Angle 3.50/TCH 50).

*LNAV only

NRWOD 2000 097° 4 NM Holding Pattern

PHINZ 277° 2500

CAMAK 1.9 NM to RW28 *1160 2000

GP 3.00° TCH 60

	1.9 NM	2.6 NM	6.8 NM	
CATEGORY	A	B	C	D
LPV DA	787-7/8	290 (300-7/8)	787-1	290 (300-1)
LNAV/VNAV DA	810-1 313 (400-1)			
LNAV MDA	880-1	383 (400-1)	880-1 1/8	383 (400-1 1/8)
CIRCLING	1060-1 559 (600-1)	1080-1 579 (600-1)	1200-2 699 (700-2)	1240-2 1/4 739 (800-2 1/4)

HIRL Rwy 10-28 0

SE-4, 07 AUG 2025 to 04 SEP 2025

SE-4, 07 AUG 2025 to 04 SEP 2025