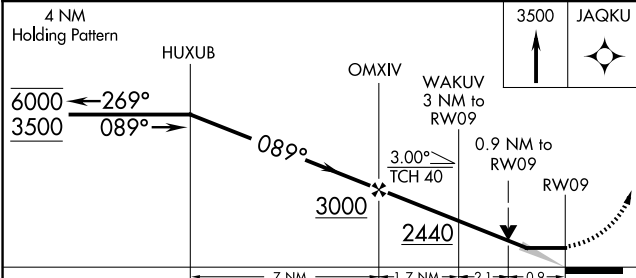
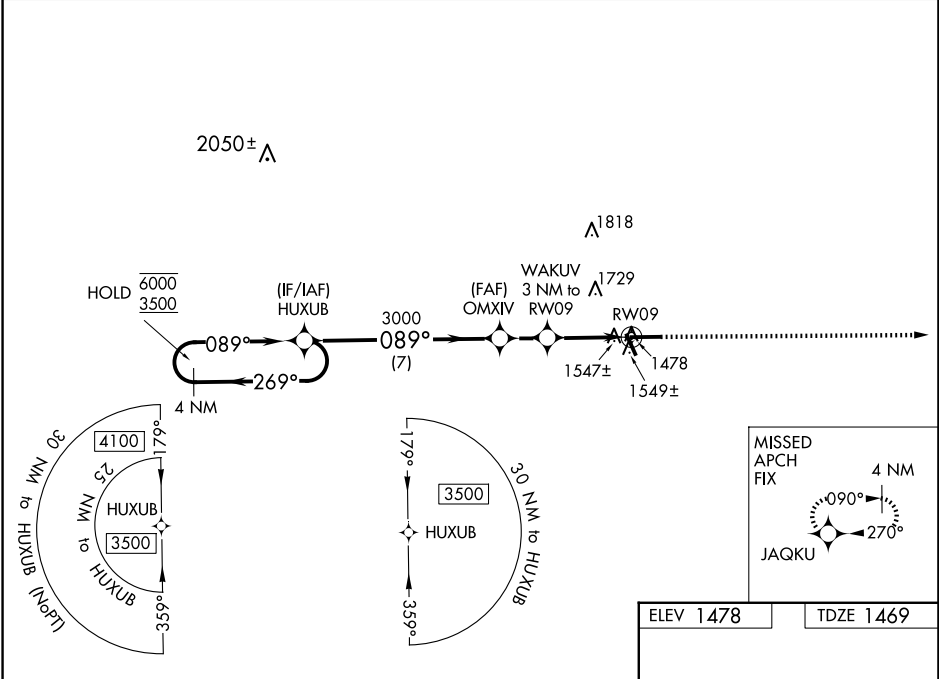


WAAS CH 99331 W09A	APP CRS 089°	Rwy Idg TDZE 1469 Apt Elev 1478	6000
--	------------------------	---	-------------

RNAV (GPS) RWY 9
TAYLOR COUNTY (MDZ)

RNP APCH.	MISSED APPROACH: Climb to 3500 direct JAQKU and hold.
-----------	---

AWOS-3 119.025	MINNEAPOLIS CENTER 124.4 317.7	UNICOM 122.8 (CTAF) 0
--------------------------	--	---------------------------------



ELEV 1478	TDZE 1469
<p>089° to RW09</p> <p>91</p> <p>6000 X 100</p> <p>0.3% UP</p> <p>27</p> <p>4235 X 75</p> <p>34</p> <p>9</p> <p>1</p>	
REIL Rwys 9, 27 and 34 0	
MIRL Rwys 9-27 and 16-34 0	