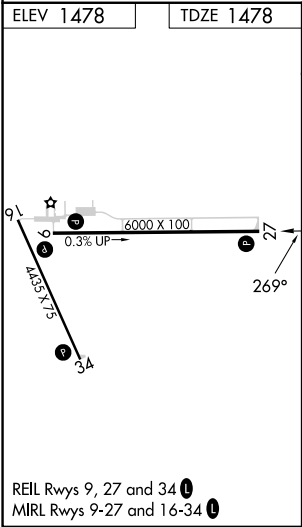
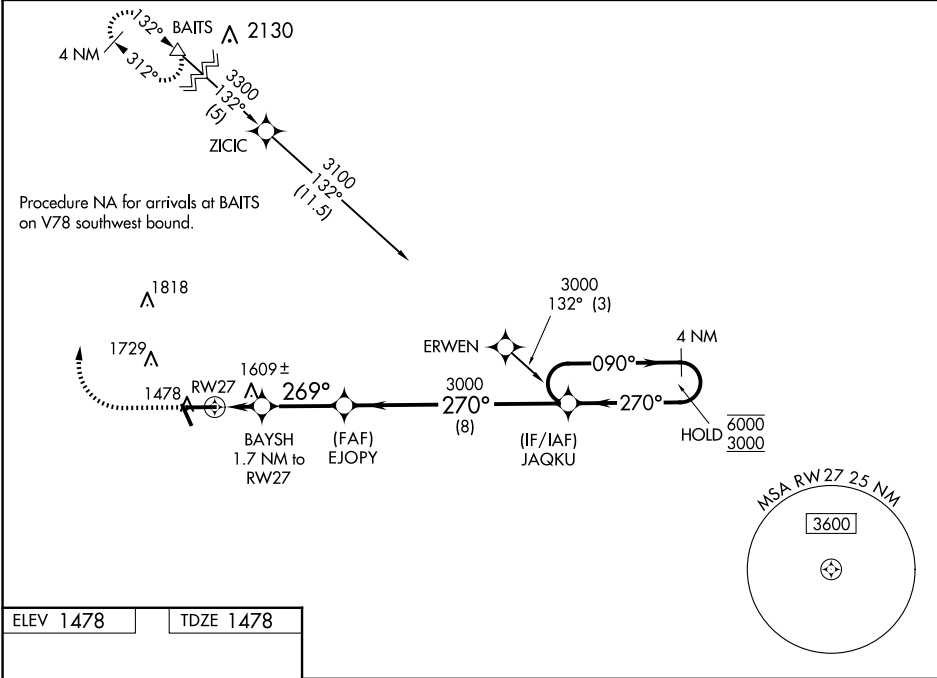


WAAS CH 66011 W27A	APP CRS 269°	Rwy Idg TDZE 1478 Apt Elev 1478
--	------------------------	---

RNAV (GPS) RWY 27
TAYLOR COUNTY (MDZ)

RNP APCH-GPS.	MISSED APPROACH: Climb to 2000 then climbing right turn to 3300 direct BAITS and hold.
<div>▼</div> <div>▲</div> For uncompensated Baro-VNAV systems, LNAV/VNAV NA below -17°C or above 54°C.	

AWOS-3 119.025	MINNEAPOLIS CENTER 124.4 317.7	UNICOM 122.8 (CTAF) 0
--------------------------	--	---------------------------------



2000	3300	BAITS	EJOPY	JAQKU	4 NM Holding Pattern
		△	3000		
			BAYSH 1.7 NM to RW27		
			1.1 NM to RW27		
			2060		
			269°		
			270°		
			3000		
			270°		
			090°		
			6000		
			3000		
			GP 3.00°		
			TCH 46		
			1.1 NM		
			0.7 NM		
			2.9 NM		
			8 NM		
CATEGORY	A	B	C	D	
LPV DA		1678-¾	200 (200-¾)		
LNAV/VNAV DA		1877-1½	399 (400-1½)		
LNAV MDA	1860-1	382 (400-1)	1860-1½	382 (400-1½)	
CIRCLING	1900-1 422 (500-1)	2040-1 562 (600-1)	2040-1½ 562 (600-1½)	2180-2¼ 702 (800-2¼)	

EC-3, 07 AUG 2025 to 04 SEP 2025

EC-3, 07 AUG 2025 to 04 SEP 2025