

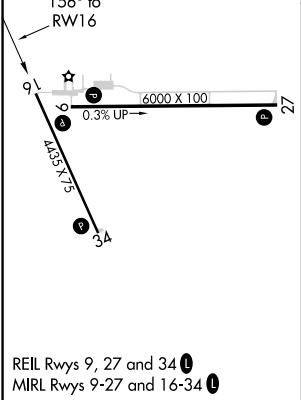
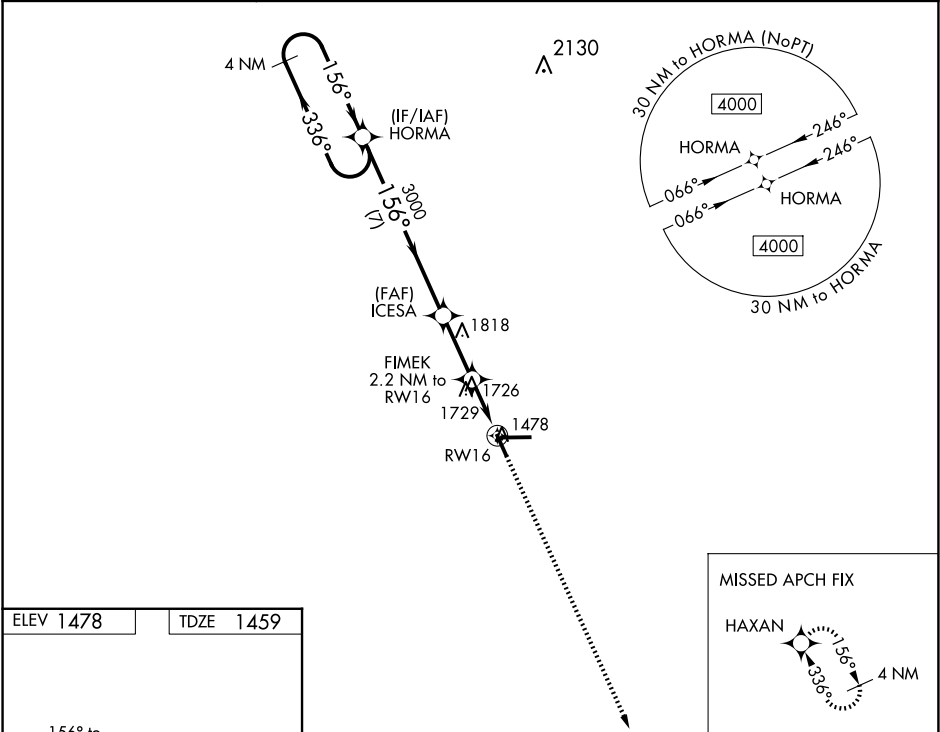
WAAS CH 86231 W16A	APP CRS 156°	Rwy Idg TDZE 1459 Apt Elev 1478
--	------------------------	---

RNAV (GPS) RWY 16

TAYLOR COUNTY (MDZ)

RNP APCH.	When local altimeter setting not received, use Merrill altimeter setting and increase all MDA 100 feet and increase all Cat C/D visibility ¼ mile. Rwy 16 helicopter visibility reduction below ¾ SM NA. VDP NA when using Merrill altimeter setting.	MISSED APPROACH: Climb to 4000 direct HAXAN and hold.
-----------	---	--

AWOS-3 119.025	MINNEAPOLIS CENTER 124.4 317.7	UNICOM 122.8 (CTAF) 0
--------------------------	--	---------------------------------



4 NM Holding Pattern		HORMA		VGSI and descent angles not coincident (VGSI Angle 3.00/TCH 37).		4000 ↑		HAXAN ✦	
4000 ← 336°		→ 156°		156°		3000 ✕		FIMEK 2.2 NM to RW16	
						3.00° TCH 45		1.7 NM to RWY16	
						2200		RW16	
		7 NM		2.5 NM		0.5 NM		1.7 NM	
CATEGORY	A	B	C	D					
LP MDA	2040-1	581 (600-1)	2040-1¾	581 (600-1¾)					
LNAV MDA	2060-1	601 (600-1)	2060-1¾	601 (600-1¾)					
CIRCLING	2060-1	582 (600-1)	2060-1¾ 582 (600-1¾)	2180-2¼ 702 (800-2¼)					