

APP CRS	Rwy Idg	3196
182°	TDZE	313
	Apt Elev	313

RNAV (GPS) RWY 18

MISSISSIPPI COUNTY (CHQ)

RNP APCH-GPS.

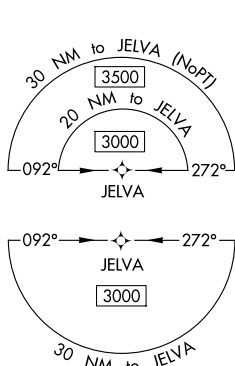
T Procedure NA at night. Use Sikeston altimeter setting, if not received use Cairo altimeter setting and increase all MDA 20 feet. Helicopter visibility reduction below 1 SM NA.

MISSED APPROACH: Climb to 3000 direct CEDKA and hold.

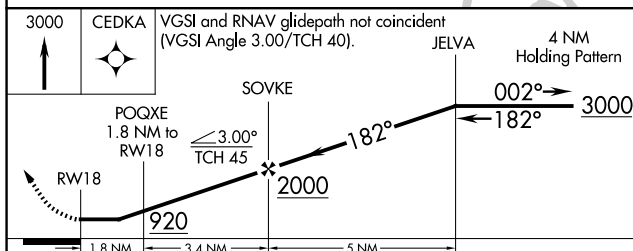
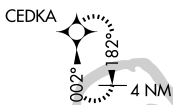
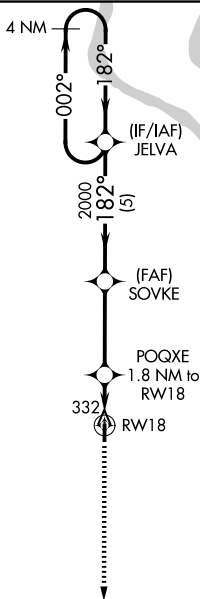
SIK AWOS-3
119,175


MEMPHIS CENTER
133.65 292.15

CTAF
122.9 **L**



Δ 1009



CATEGORY	A	B	C	D
LNAV MDA	800-1 487 (500-1)		NA	
 CIRCLING	800-1 487 (500-1)	860-1 547 (600-1)	NA	

