

WAAS CH 77833 W35A	APP CRS 357°	Rwy Idg 4020 TDZE 1168 Apt Elev 1176
--	------------------------	---

RNAV (GPS) RWY 35

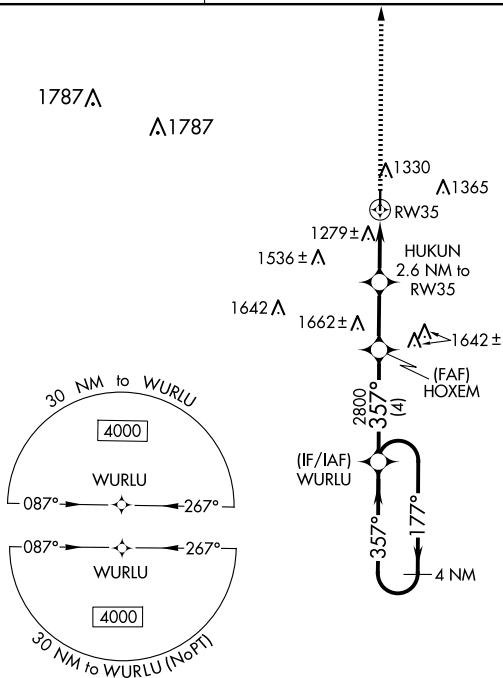
HAMPTON MUNI (HPT)

V VDP and Baro-VNAV NA when using Mason City altimeter setting. For uncompensated Baro-VNAV systems, LNAV/VNAV NA below -17°C (2°F) or above 54°C (130°F).
A NA DME/DME RNP-0.3 NA. Helicopter visibility reduction below ¾ SM NA. When local altimeter setting not received, use Mason City altimeter setting and increase all DA 67 feet and all MDA 80 feet, and LNAV/VNAV all Cats visibility ¼ mile.

MISSED APPROACH:
Climb to 4000 direct
WIBUD and hold,
continue climb-in-hold
to 4000.

AWOS-3
121.025

MINNEAPOLIS CENTER
134.0 288.3

UNICOM
122.7 (CTAF) **L**

MISSED APCH FIX

177°

357°

4 NM

WIBRID

