

APP CRS
052°

Rwy Idg
TDZE
Apt Elev

4000
990
995

RNAV (GPS) RWY 5

TRI-STATE STEUBEN COUNTY (ANQ)

RNP APCH.

▼

▲ NA

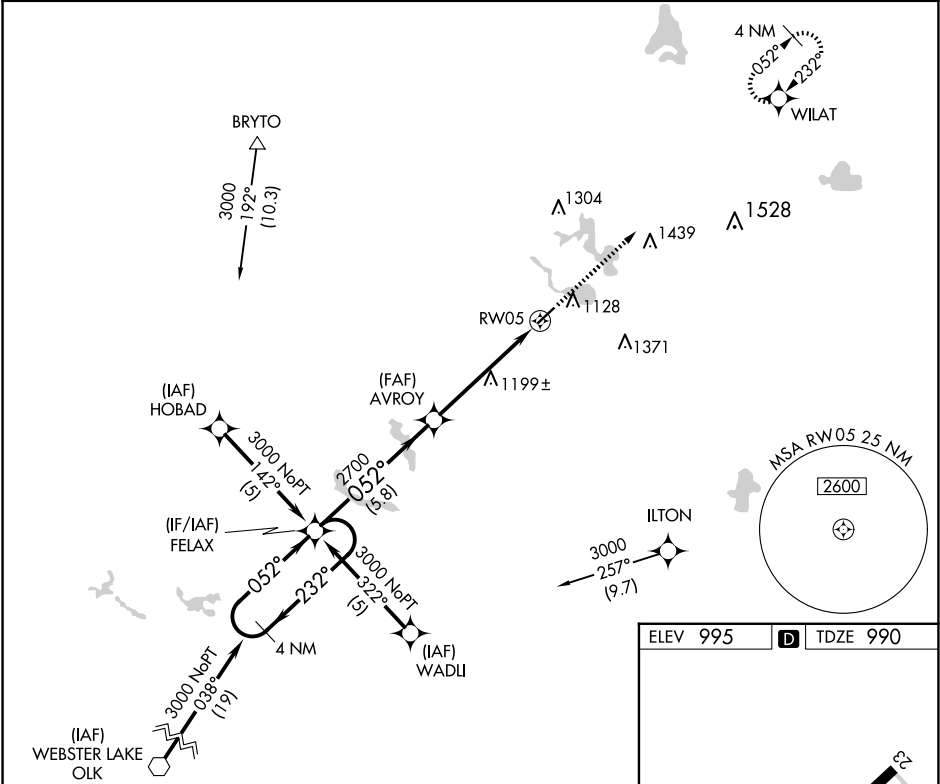
For uncompensated Baro-VNAV systems, LNAV/VNAV NA below -16°C or above 54°C.
Rwy 5 helicopter visibility reduction below ¾ SM NA.

MISSED APPROACH:
Climb to 3000 direct
WILAT and hold.

AWOS-3
118.175

FORT WAYNE APP CON
127.2 284.6 (SW/NW)
132.15 284.6 (SE/NE)

UNICOM
123.075 (CTAF) 0



4 NM Holding Pattern

FELAX

3000

232°

052°

GP 3.00°

TCH 40

AVROY

2700

052°

2700

5.8 NM

3.8 NM

1.4 NM

3000

WILAT

* LNAV only

* 1.4 NM to RW05

RW05

052°

4540 X 75

REIL Rwy 5 and 23 0

MIRL Rwy 5-23 0

CATEGORY	A	B	C	D
LNAV/VNAV	DA	1474-1¾	484 (500-1¾)	NA
LNAV MDA	1460-1	470 (500-1)	1460-1½	470 (500-1½)

EC-2, 07 AUG 2025 to 04 SEP 2025

EC-2, 07 AUG 2025 to 04 SEP 2025