

APP CRS
232°

Rwy Idg
TDZE
995

4000
995
Apt Elev

RNAV (GPS) RWY 23

TRI-STATE STEUBEN COUNTY (A.N.Q.)

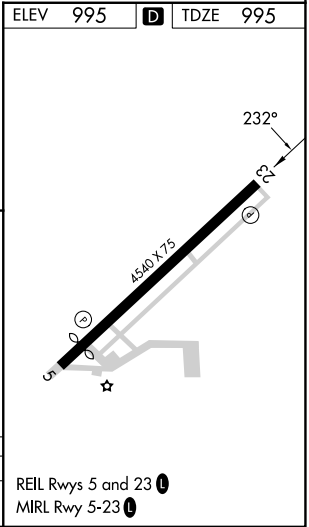
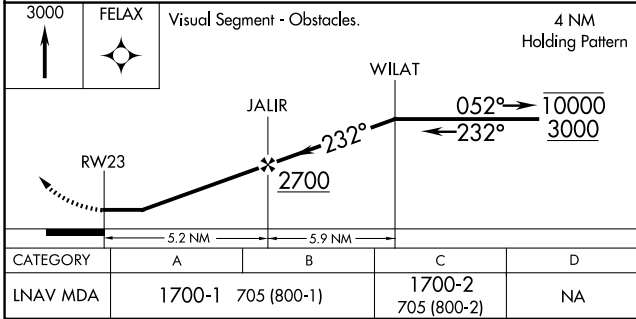
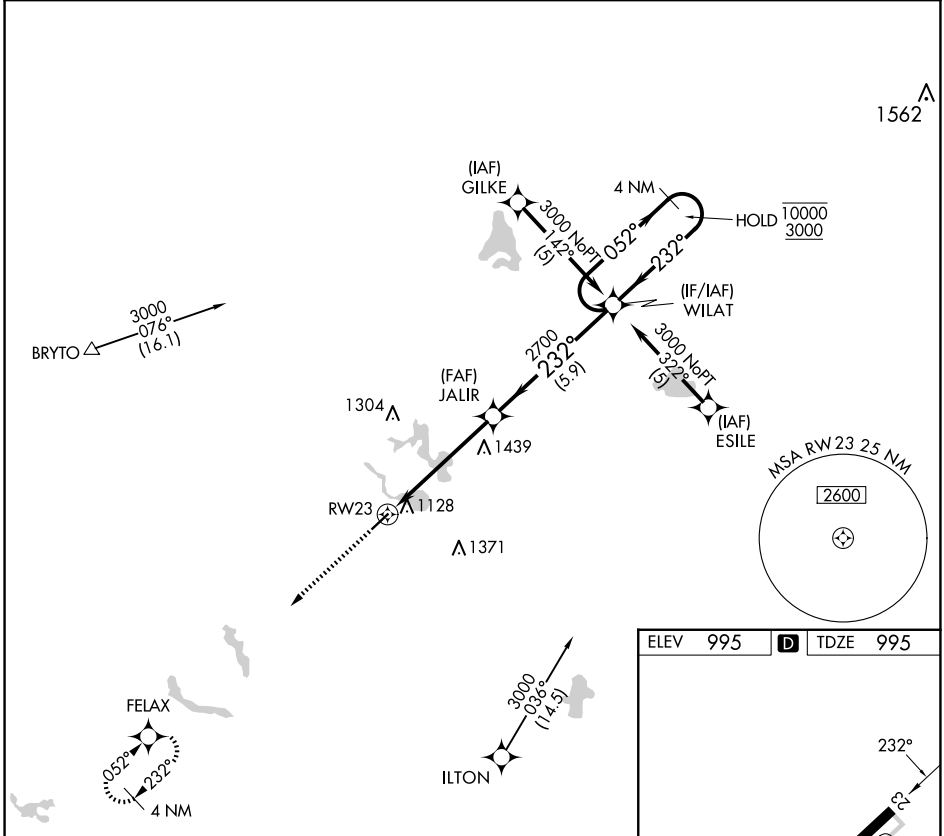
RNP APCH.

T

Rwy 23 helicopter visibility reduction below 1 SM NA.
Procedure NA at night.

MISSED APPROACH: Climb to 3000
direct FELAX and hold.

AWOS-3 118.175	FORT WAYNE APP CON 127.2 284.6 (SW/NW) 132.15 284.6 (SE/NE)	UNICOM 123.075 (CTAF) 1
-------------------	---	----------------------------



EC-2, 07 AUG 2025 to 04 SEP 2025

EC-2, 07 AUG 2025 to 04 SEP 2025