

WAAS CH <b>42942</b> <b>W32A</b>	APP CRS <b>314°</b>	Rwy Idg <b>4600</b> TDZE <b>987</b> Apt Elev <b>987</b>
--	------------------------	---

# RNAV (GPS) RWY 32

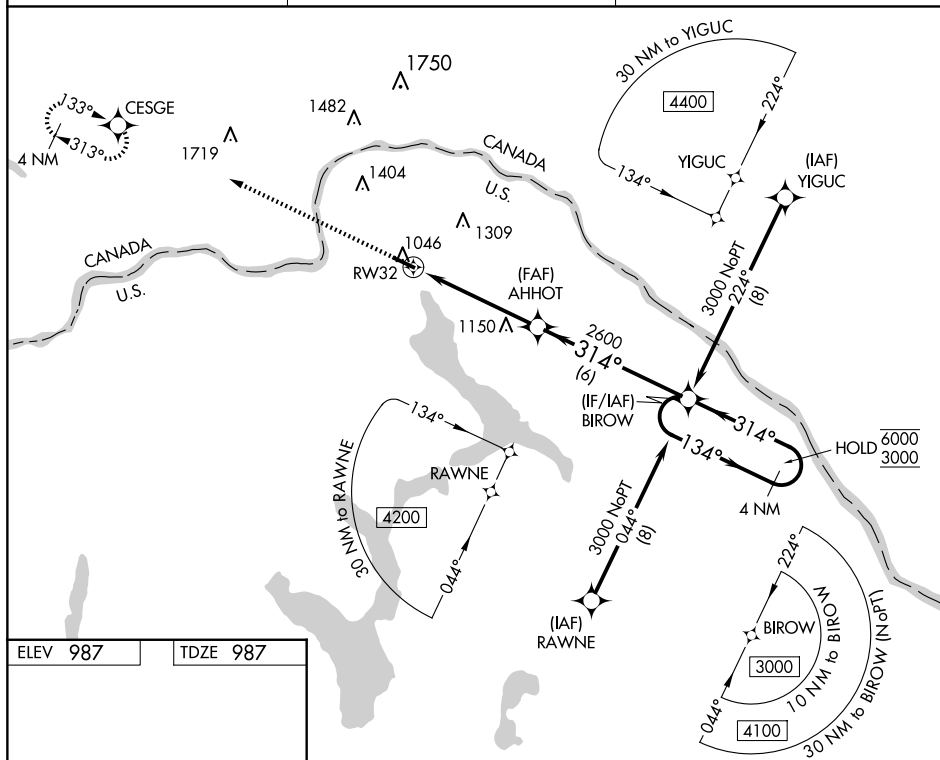
## NORTHERN AROOSTOOK RGNL (FVE)

RNP APCH - GPS.	
-----------------	--

**T** VDP NA when using CAR altimeter setting. When local altimeter setting not received, use CAR  
**A** altimeter setting and increase LPV to 1302, and all MDA 120 feet. Increase LNAV Cats C, D  
visibility  $\frac{3}{8}$  SM, and increase Circling Cat C visibility  $\frac{1}{8}$  SM and Cat D visibility  $\frac{1}{4}$  SM.

**MISSED APPROACH:**  
Climb to 3100 direct  
CESGE and hold.

ASOS <b>135.725</b>	BOSTON CENTER <b>124.75 239.05</b>	UNICOM <b>122.7 (CTAF) 0</b>
------------------------	---------------------------------------	---------------------------------



REIL Rwy 14 and 32 **L**  
MIRL Rwy 14-32 **L**

3100 CESSGE

4600 X 75

32

314°

1.2 NM to RWY 32

314°

AHHOT 2600

314°

4 NM Holding Pattern

134° → 6000  
← 314° 3000

GP 3.00°  
TCH 40

CATEGORY	A	B	C	D
LPV DA	1187-1 200 (200-1)			
LNNAV MDA	1400-1 413 (500-1)		1400-1½ 413 (500-1½)	
<b>C</b> CIRCLING	1560-1 573 (600-1)	1580-1 593 (600-1)	1840-2½ 853 (900-2½)	1840-2¾ 853 (900-2¾)