

WAAS CH <b>93917</b> <b>W14A</b>	APP CRS <b>133°</b>	Rwy Idg TDZE Apt Elev	<b>4600</b> <b>984</b> <b>987</b>
--	------------------------	-----------------------------	---

RNAV (GPS) RWY 14

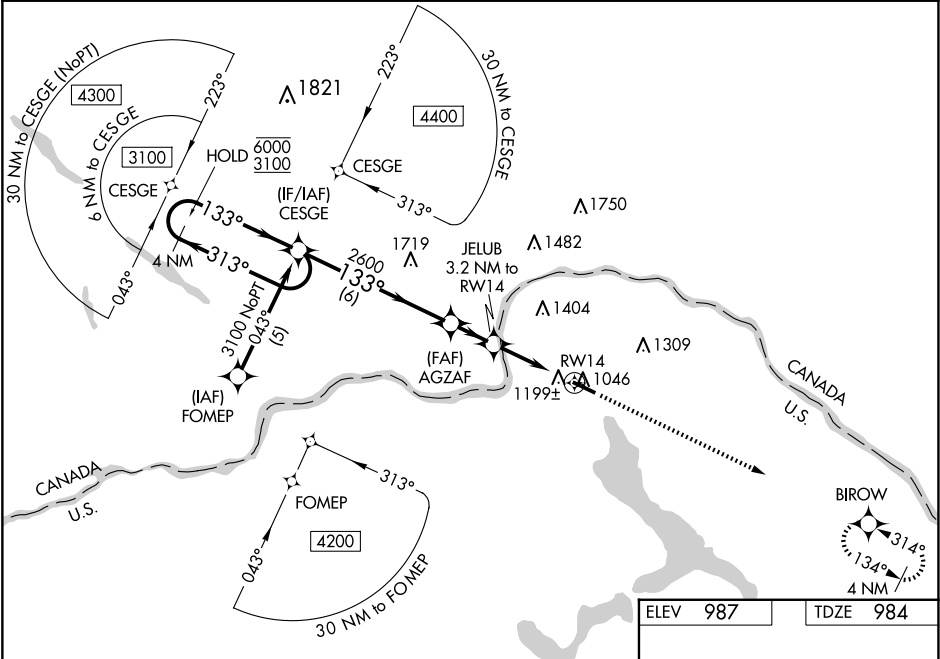
NORTHERN AROOSTOOK RGNL (FVE)

RNP APCH - GPS.

⚠ For uncompensated Baro-VNAV systems, LNAV/VNAV NA below -16°C or above 54°C. Rwy 14 helicopter visibility reduction below ¾ SM NA. Baro-VNAV and VDP NA when using CAR altimeter setting. When local altimeter setting not received, use CAR altimeter setting and increase LPV DA to 1386 feet, LNAV/VNAV DA to 1635 feet and all MDAs 120 feet. Increase LPV all Cats visibility ½ SM, LNAV Cat C visibility ¾ SM, Cat D and Circling Cat D visibility ¼ SM and Circling Cat C visibility ½ SM.

MISSED APPROACH:  
Climb to 3000 direct BIROW and hold.

ASOS <b>135.725</b>	BOSTON CENTER <b>124.75 239.05</b>	UNICOM <b>122.7 (CTAF) 0</b>
------------------------	---------------------------------------	---------------------------------



4 NM Holding Pattern

GP 3.00° TCH 40

6000 3100

CESGE

AGZAF

JELUB 3.2 NM to RW14

2600

2020

1.4 NM to RW14

RW14

3000 BIROW

133°

14

4600 X 75

32

CATEGORY	A	B	C	D
LPV DA		1270-1	286 (300-1)	
LNAV/VNAV DA		1519-2	535 (600-2)	
LNAV MDA	1460-1	476 (500-1)	1460-1½ 476 (500-1½)	1460-1½ 476 (500-1½)
CIRCLING	1560-1 573 (600-1)	1580-1 593 (600-1)	1840-2½ 853 (900-2½)	1840-2¾ 853 (900-2¾)

MIRL Rwy 14-32 0  
REIL Rwy 14 and 32 0