

WAAS CH 62834 W09A	APP CRS 092°	Rwy Ldg TDZE Apt Elev	5000 856 861
--	------------------------	-----------------------------	---

RNAV (GPS) RWY 9

FRANKFORT CLINTON COUNTY RGNL (F'KR)

RNP APCH - GPS.

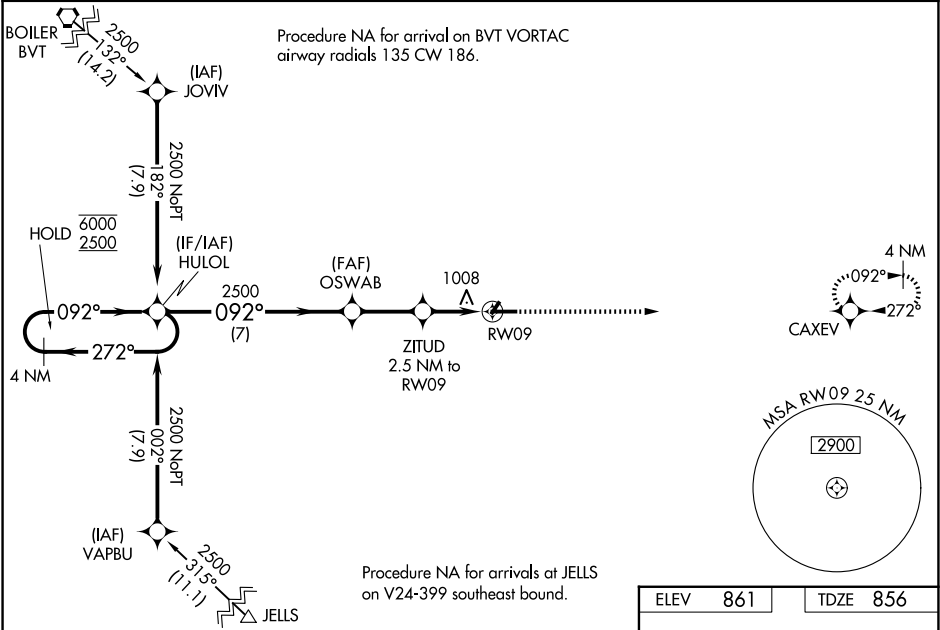
▼

⚠

Baro-VNAV and VDP NA when using TYQ altimeter setting. For uncompensated Baro-VNAV systems, LNAV/VNAV NA below -16°C or above 54°C. Circling Rwy 4, 22 NA at night.
When local altimeter setting not received, use TYQ altimeter setting: increase LPV DA to 1162 feet and LNAV/VNAV DA to 1245 feet and all MDAs 60 feet; increase LPV and LNAV/VNAV all Cats visibilities ½ SM and LNAV and Circling Cats C/D visibilities ¼ SM.

MISSED APPROACH:
Climb to 2500 direct
CAXEV and hold.

AWOS-3 124.325	GRISOM APP CON ★ 123.85 291.675	UNICOM 123.0 (CTAF) 0
--------------------------	---	---------------------------------



4 NM
Holding Pattern

VGSI and RNAV glidepath not coincident
(VGSI Angle 3.00/TCH 25).

2500
CAXEV

CATEGORY	A	B	C	D
LPV DA		1106-7/8	250 (300-7/8)	
LNAV/VNAV DA		1189-1	333 (400-1)	
LNAV MDA	1260-1	404 (400-1)	1260-1 1/8	404 (400-1 1/8)
CIRCLING	1460-1	599 (600-1)	1520-1 3/4 659 (700-1 3/4)	1520-2 659 (700-2)

MIRL Rwy 4-22 and 9-27 0
REIL Rwy 9 and 27 0