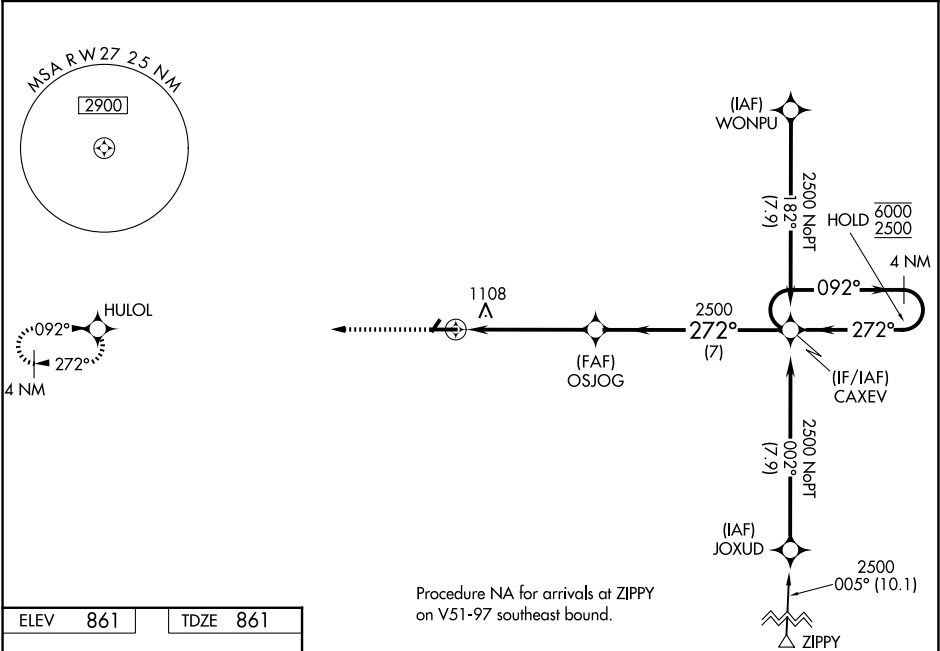


WAAS CH 65734 W27A	APP CRS 272°	Rwy Ldg TDZE Apt Elev	5000 861 861
--	------------------------	-----------------------------	---

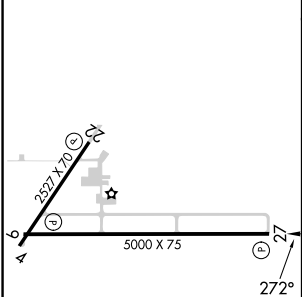
RNAV (GPS) RWY 27

FRANKFORT CLINTON COUNTY RGNL (F'K'R)

RNP APCH - GPS.		MISSED APPROACH: Climb to 2500 direct HULOL and hold.
<div><div><div></div><div></div></div><div>Circling Rwy 4, 22 NA at night. For uncompensated Baro-VNAV systems, LNAV/VNAV NA below -16°C or above 54°C.</div></div>		
AWOS-3 124.325	GRISSOM APP CON ★ 123.85 291.675	UNICOM 123.0 (CTAF) 0



ELEV 861	TDZE 861
----------	----------



2500

↑

HULOL

VGSI and RNAV glidepath not coincident
(VGSI Angle 3.00/TCH 25).

CATEGORY	A	B	C	D
LPV DA	1111-3/4 250 (300-3/4)			
LNAV/ VNAV DA	1476-13/4 615 (700-13/4)			
LNAV MDA	1420-1	559 (600-1)	1420-1 5/8	559 (600-1 5/8)
CIRCLING	1460-1	599 (600-1)	1520-1 3/4 659 (700-1 3/4)	1520-2 659 (700-2)

MIRL Rwy 9-27 and 4-22 0
REIL Rwy 9 and 27 0