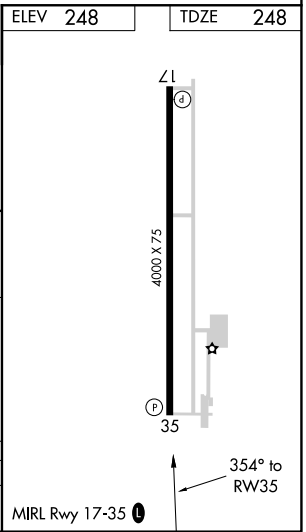
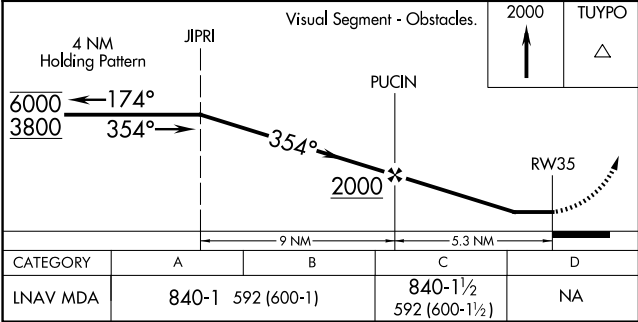
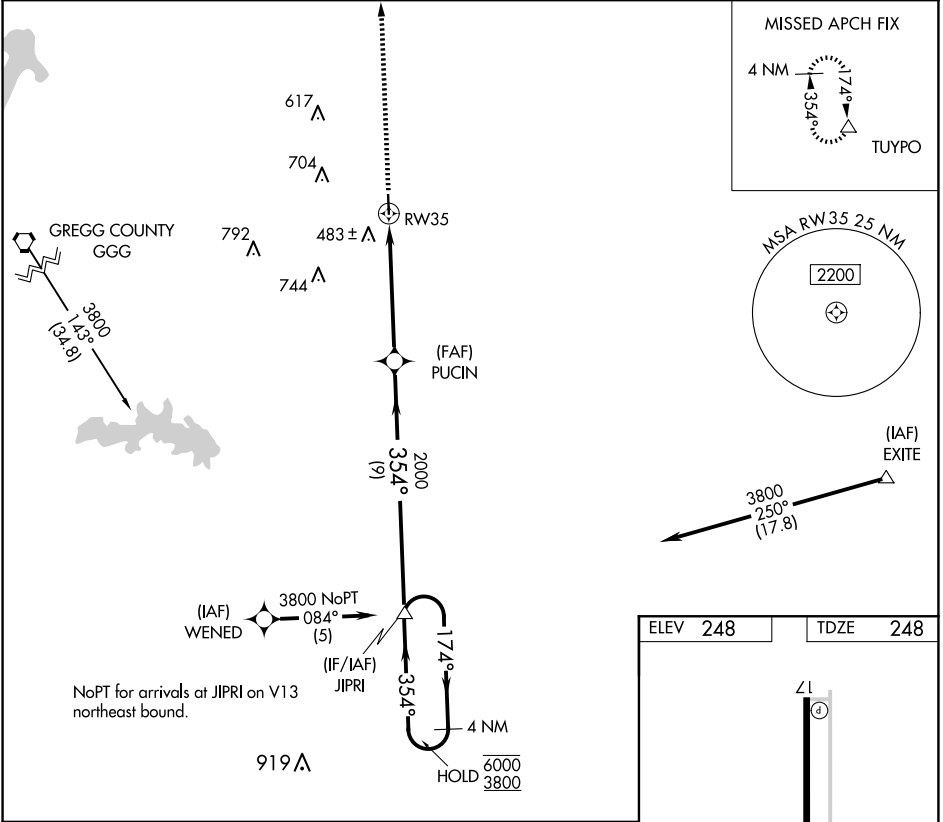


APP CRS	Rwy Idg	4000
354°	TDZE	248
	Apt Elev	248

RNAV (GPS) RWY 35
PANOLA COUNTY-SHARPE FLD (4F2)

RNP APCH-GPS.	MISSED APPROACH: Climb to 2000 direct TUYPO and hold.
▲ Rwy 35 helicopter visibility reduction below ¾ SM NA. When local altimeter setting not received, use Longview altimeter setting.	

AWOS-3PT 121.125	SHREVEPORT APP CON ★ 119.9 335.55	UNICOM 122.8 (CTAF) 0
---------------------	--------------------------------------	--------------------------



SC-2, 07 AUG 2025 to 04 SEP 2025

SC-2, 07 AUG 2025 to 04 SEP 2025