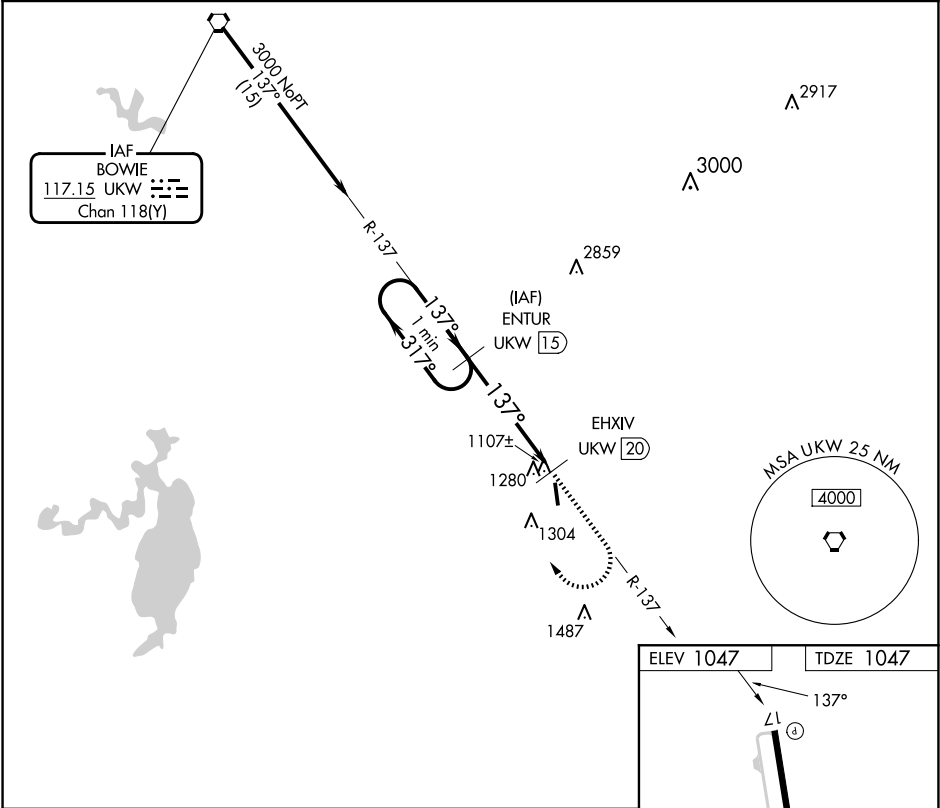


VORTAC UKW 117.15 Chan 118 (Y)	APP CRS 137°	Rwy Idg TDZE Apt Elev	4200 1047 1047
--	------------------------	-----------------------------	---

VOR/DME RWY 17
DECATUR MUNI (LUD)

When local altimeter setting not received, use Fort Worth NA Meacham Intl altimeter setting.	MISSED APPROACH: Climb to 2400 then climbing right turn to 3100 via UKW R-137 to ENTUR/15 DME and hold.
---	---

AWOS-3 118.225	LONE STAR APP CON 118.1 306.95	UNICOM 122.8 (CTAF)
--------------------------	--	-------------------------------



One Minute Holding Pattern		ENTUR UKW	2400	3100	ENTUR UKW
3100 ← 317° → 3000			↑	↻ UKW R-137	
VGSI and descent angles not coincident (VGSI Angle 3.50/TCH 23).					EHXIV UKW
					3.32° TCH 40
					5 NM 0.5
CATEGORY	A	B	C	D	
S-17	1700-1 653 (700-1)	1700-1¼ 653 (700-1¼)	NA		
CIRCLING	1800-1 753 (800-1)	1800-1¼ 753 (800-1¼)	NA		

