

WAAS CH 40107 W17A	APP CRS 169°	Rwy Idg 4200 TDZE 1047 Apt Elev 1047
--	------------------------	---

RNAV (GPS) RWY 17

DECATUR MUNI (LUD)

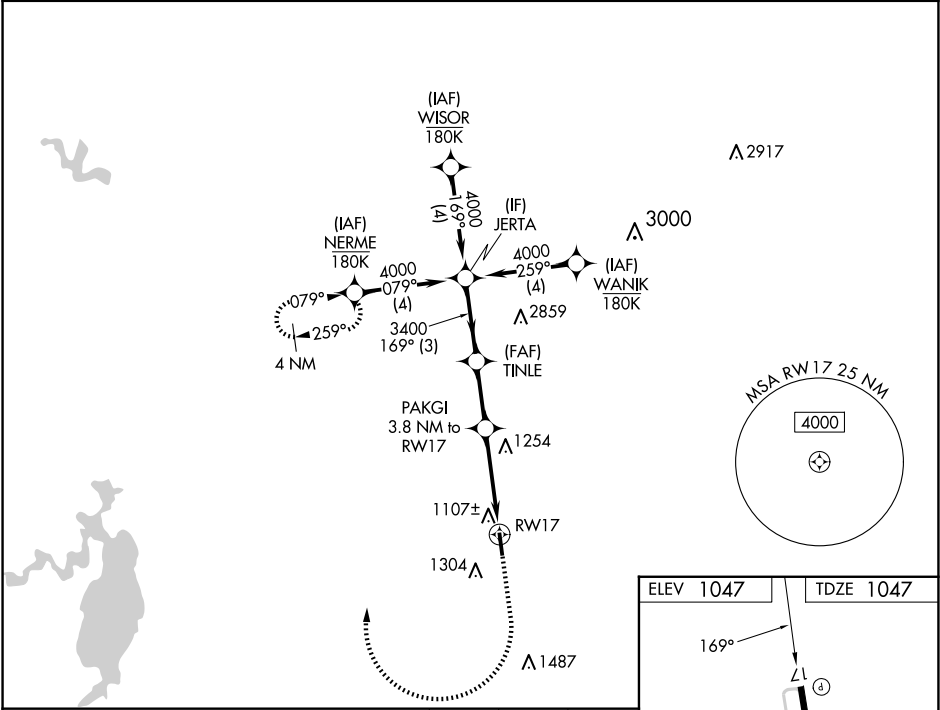
RNP APCH - GPS.

⚠

For uncompensated Baro-VNAV systems, LNAV/VNAV NA below -17°C or above 54°C. Baro-VNAV and VDP NA when using FTW altimeter setting. When local altimeter setting not received, use FTW altimeter setting and increase LPV DA to 1408 feet; increase LNAV/VNAV DA to 1466 feet and all visibilities ½ SM; increase all MDAs 120 feet.

MISSED APPROACH: Climb to 1500 then climbing right turn to 4000 direct NERME and hold, continue climb-in-hold.

AWOS-3 118.225	LONE STAR APP CON 118.1 306.95	UNICOM 122.8(CTAF) 0
--------------------------	--	--------------------------------



VGSI and RNAV glidepath not coincident (VGSI Angle 3.50/TCH 23).

JERTA

TINLE

PAKGI 3.8 NM to RW17

1.2 NM to RW17

RW17

4000

3400

1720

GP 3.50° TCH 40

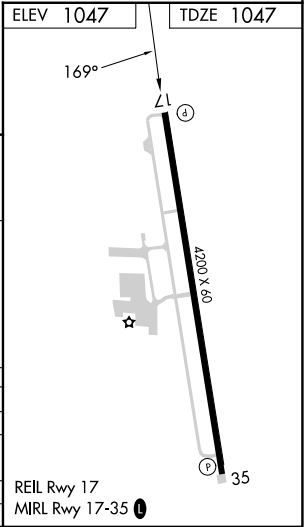
3 NM

2.4 NM

2.6 NM

1.2 NM

CATEGORY	A	B	C	D
LPV DA	1297-1	250 (300-1)		NA
LNAV/VNAV DA	1355-1	308 (400-1)		NA
LNAV MDA	1500-1	453 (500-1)		NA
CIRCLING	1600-1	553 (600-1)		NA



SC-2, 07 AUG 2025 to 04 SEP 2025

SC-2, 07 AUG 2025 to 04 SEP 2025