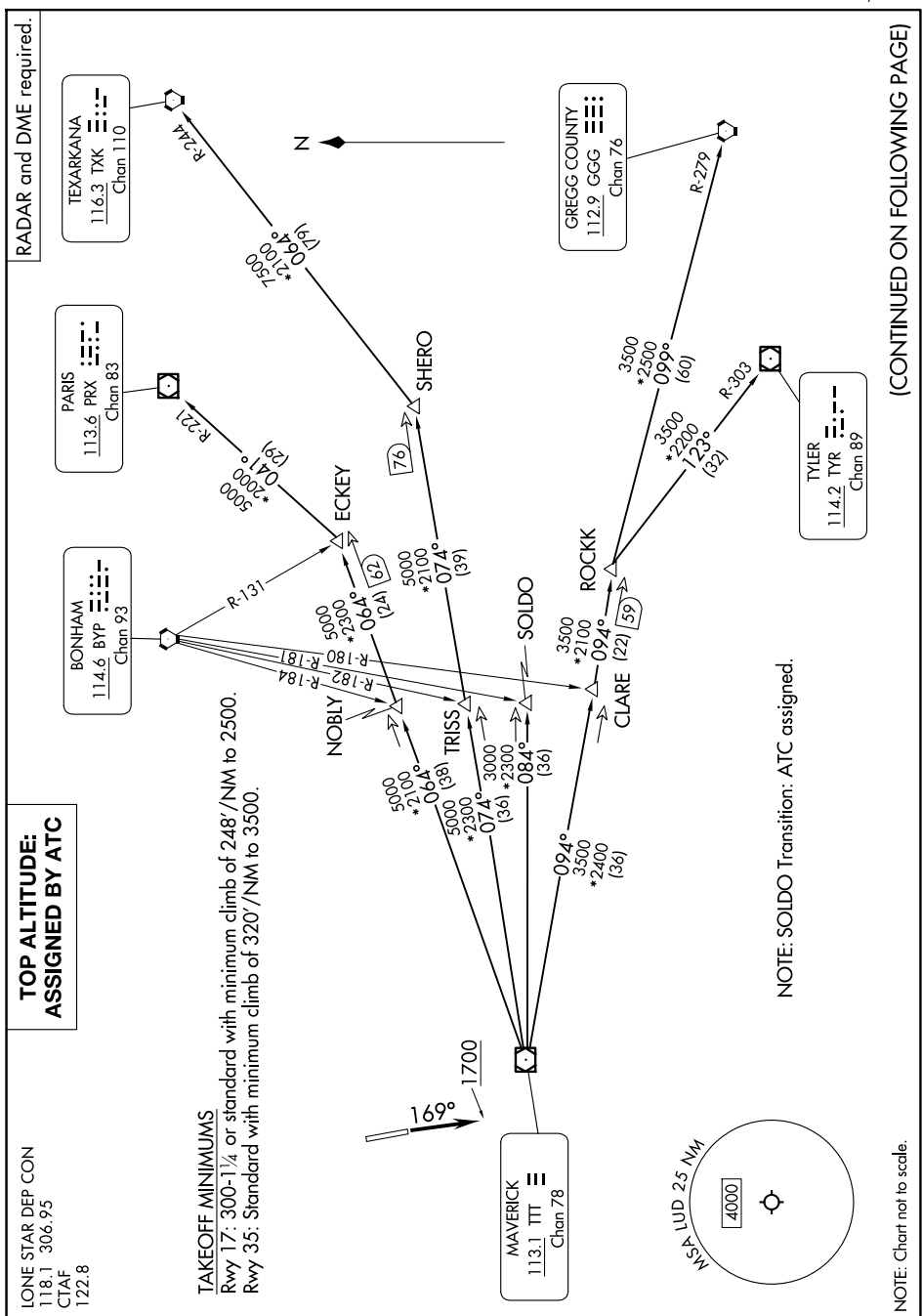


GARLAND SIX DEPARTURE



(CONTINUED ON FOLLOWING PAGE)

SC-2, 07 AUG 2025 to 04 SEP 2025

NOTE: Chart not to scale.

NOTE: SOLDO Transition: ATC assigned.

GARLAND SIX DEPARTURE

(GARL6.TTT) 17APR25

DECATUR, TEXAS

DECATUR MUNI (LUD)