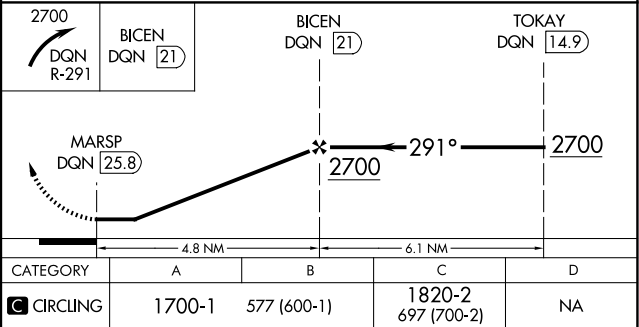
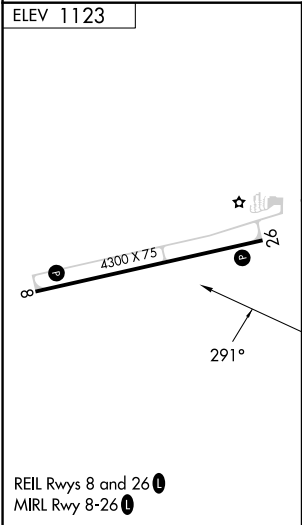
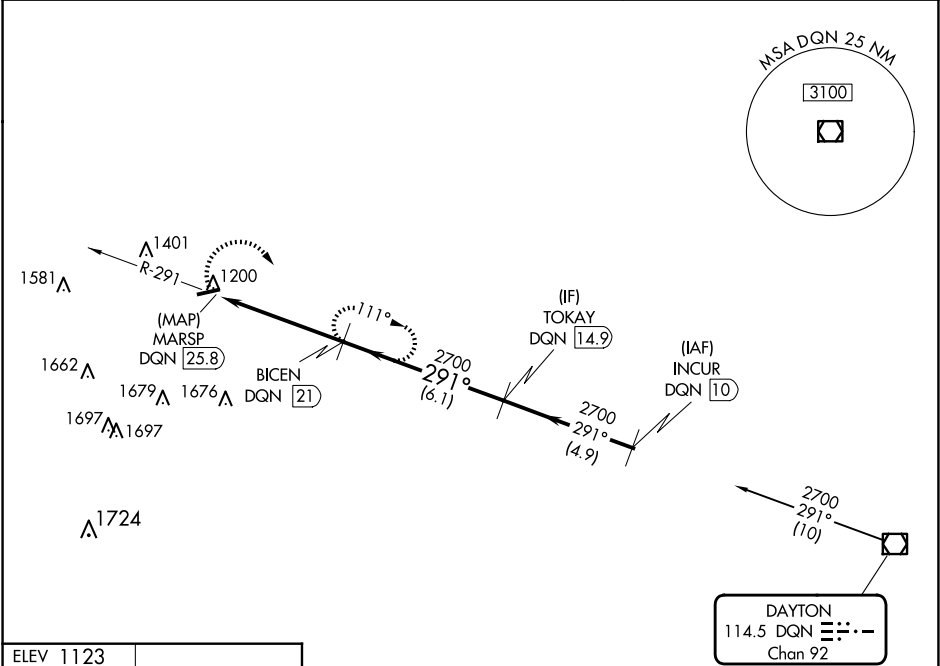


VOR/DME DQN	APP CRS	Rwy Idg	N/A
114.5	291°	TDZE	N/A
Chan 92		Apt Elev	1123

VOR-A
RANDOLPH COUNTY (I22)

DME required.	MISSED APPROACH: Climbing right turn to 2700 on DQN VOR/DME R-291 to BICEN/21 DME and hold.
NA	

VES AWOS-3PT 125.9	COLUMBUS APP CON 134.45 352.05	UNICOM 123.0 (CTAF)
-----------------------	-----------------------------------	------------------------



EC-2, 07 AUG 2025 to 04 SEP 2025

EC-2, 07 AUG 2025 to 04 SEP 2025