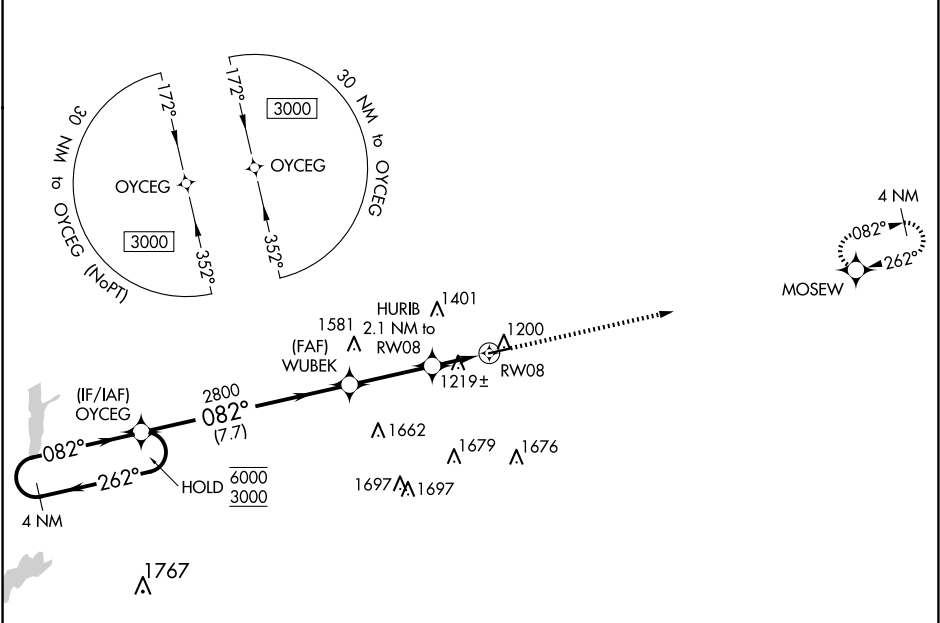


WAAS CH 90420 W08A	APP CRS 082°	Rwy Idg TDZE Apt Elev	4300 1121 1123
--	------------------------	-----------------------------	---

RNAV (GPS) RWY 8

RANDOLPH COUNTY (I22)

RNP APCH.		MISSED APPROACH: Climb to 3000 direct MOSEW and hold.
Baro-VNAV NA.		
VES AWOS-3PT 125.9	COLUMBUS APP CON 134.45 352.05	UNICOM 123.0 (CTAF) 0



ELEV 1123

TDZE 1121

4 NM Holding Pattern

VGSI and RNAV glidepath not coincident (VGSI Angle 3.00/TCH 25).

3000 MOSEW

GP 3.00° TCH 45

WUBEK 2800

HURIB 2.1 NM to RW08

RW08

7.7 NM 3.1 NM 2.1 NM

CATEGORY	A	B	C	D
LPV DA	1430-7/8	309 (400-7/8)		NA
LNAV/VNAV DA	1430-7/8	309 (400-7/8)		NA
LNAV MDA	1560-1	439 (500-1)	1560-1 1/4 439 (500-1 1/4)	NA
CIRCLING	1620-1	497 (500-1)	1820-2 697 (700-2)	NA

MIRL Rwy 8-26

REIL Rws 8 and 26