

WAAS CH 78120 W26A	APP CRS 262°	Rwy Idg TDZE Apt Elev	4300 1123 1123
--	------------------------	-----------------------------	---

RNAV (GPS) RWY 26

RANDOLPH COUNTY (I22)

RNP APCH - GPS.	MISSED APPROACH: Climb to 2500 then climbing left turn to 3000 direct MOSEW and hold.
Baro-VNAV NA. Use Versailles altimeter setting; when not received, use Muncie altimeter setting; increase all DA/MDA 20 feet and visibility LPV all Cats ½ SM.	

VES AWOS-3PT 125.9	COLUMBUS APP CON 134.45 352.05	UNICOM 123.0 (CTAF) 0
------------------------------	--	---------------------------------

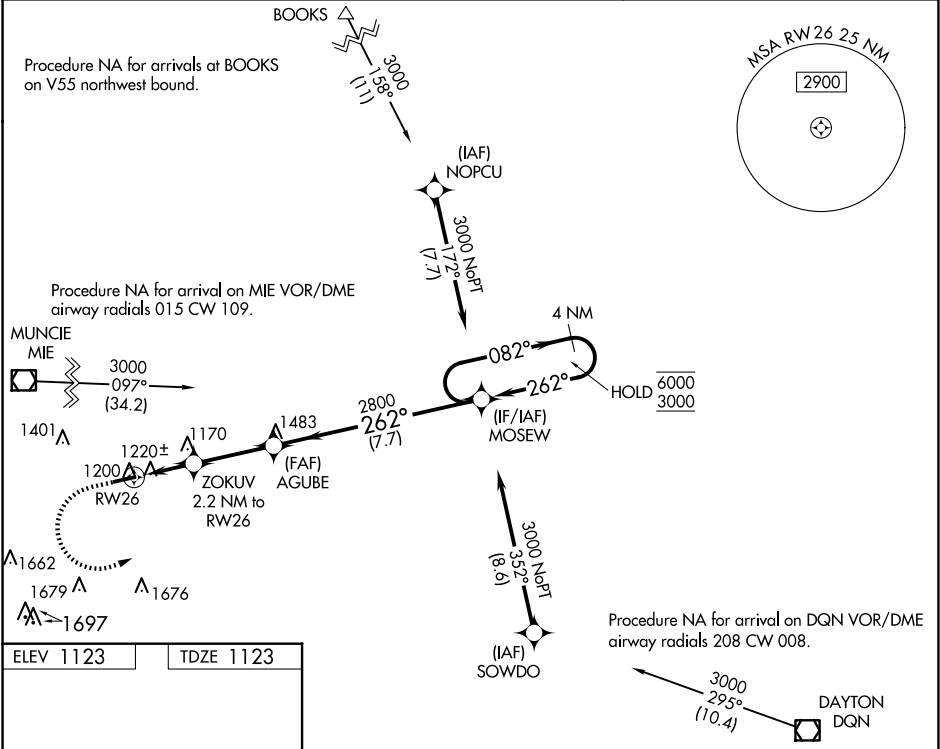


Diagram illustrating the approach procedure for RW26. The diagram shows the runway (RW26) and the holding pattern. Key altitudes and distances are marked: 4300 X 75, 262°, 2800, 1860, 262°, 082°, 6000, 3000, GP 3.00°, TCH 40, 2.2 NM, 2.9 NM, 7.7 NM, 4 NM Holding Pattern, MOSEW, AGUBE, ZOKUV 2.2 NM to RW26, VGSI and RNAV glidepath not coincident (VGSI Angle 3.00/TCH 25).

CATEGORY	A	B	C	D
LPV DA	1495-1	372 (400-1)		NA
LNAV/VNAV DA	1449-1	326 (400-1)		NA
LNAV MDA	1540-1	417 (500-1)	1540-1 ³ / ₈ 417 (500-1 ³ / ₈)	NA
C CIRCLING	1620-1	497 (500-1)	1820-2 697 (700-2)	NA

REIL Rwy 8 and 26 **1**

MIRL Rwy 8-26 **1**