

APP CRS	Rwy Idg	4033
066°	TDZE	775
	Apt Elev	775

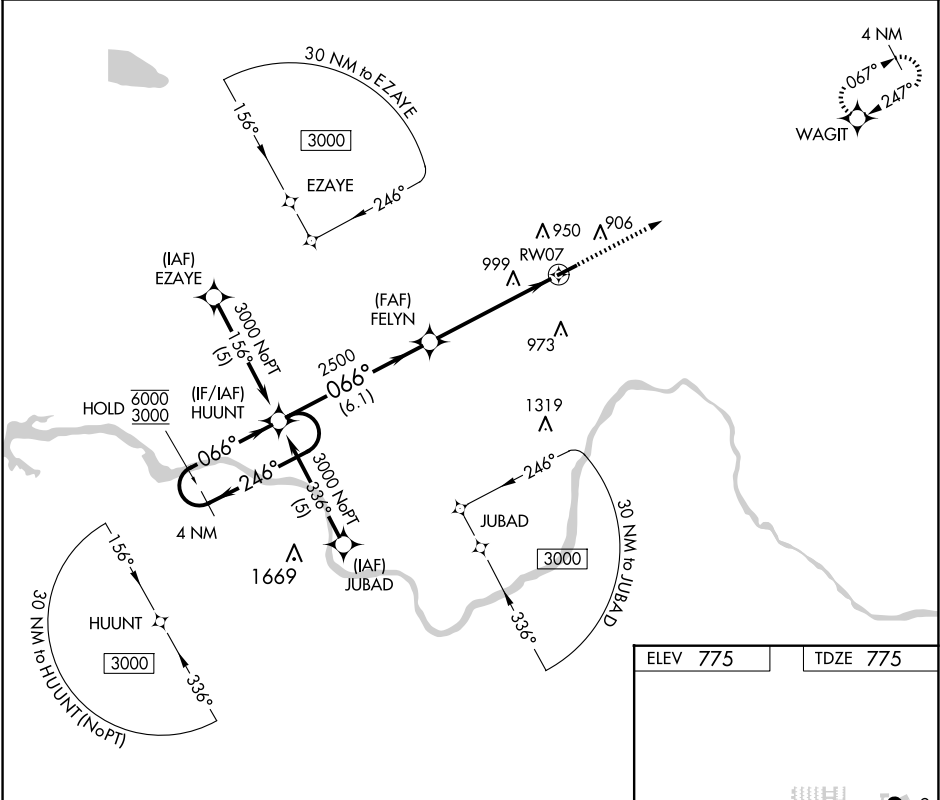
RNAV (GPS) RWY 7

PAUL C MILLER/SPARTA (8D4)

RNP APCH:

<div><div>▼</div><div>NA</div></div> <div>Rwy 7 helicopter visibility reduction below ¾ SM NA. When local altimeter setting not received, use Grand Rapids altimeter setting. VDP NA when using Grand Rapids altimeter setting.</div>	MISSED APPROACH: Climb to 3000 direct WAGIT and hold.
---	---

AWOS-3PT 126.65	GREAT LAKES APP CON ★ 124.6 257.6	UNICOM 122.8 (CTAF) 0
--------------------	--------------------------------------	--------------------------



4 NM Holding Pattern		Visual Segment - Obstacles.		3000	WAGIT
				↑	✦
CATEGORY	A	B	C	D	
LNAV MDA	1380-1	605 (700-1)		NA	
CIRCLING	1380-1	605 (700-1)		NA	

ELEV 775	TDZE 775
MIRL Rwy 7-25 0	
REIL Rwy 7 and 25 0	