

WAAS CH 82327 W36A	APP CRS 002°	Rwy Idg TDZE 681 Apt Elev 698
--	------------------------	---

RNAV (GPS) RWY 36

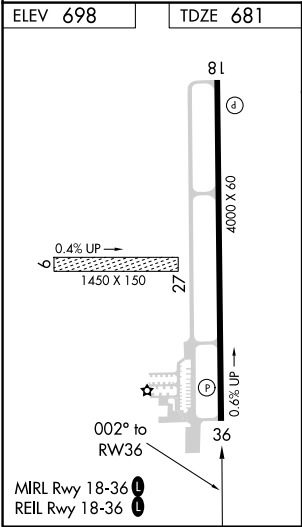
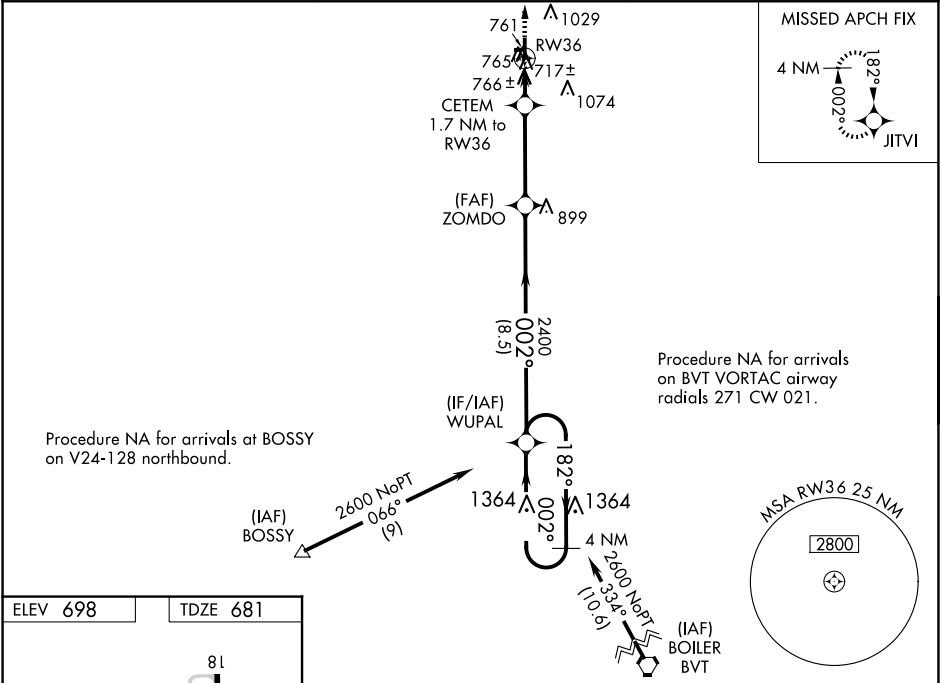
JASPER COUNTY (RZL)

RNP APCH.

Baro-VNAV NA when using Knox altimeter setting. For uncompensated Baro-VNAV systems, LNAV/VNAV NA below -22°C or above 54°C. When local altimeter setting not received use Knox altimeter setting and increase all DA 78 feet and all MDA 80 feet, increase LPV and LNAV/VNAV all Cats visibility ⅓ mile and LNAV and Circling Cat C visibility ¼ mile. Rwy 36 helicopter visibility reduction below 1 SM NA. Circling NA to Rwys 9 and 27.

MISSED APPROACH:
Climb to 2600 direct
JITVI and hold.

AWOS-3P 119.175	CHICAGO CENTER 132.5 284.7	UNICOM 122.8 (CTAF) 0
---------------------------	--------------------------------------	---------------------------------



2600 ↑ JITVI		WUPAL 4 NM Holding Pattern			
* LNAV only.		ZOMDO 2400	182° → ← 002°	2600	
CETEM 1.7 NM to RW36		* 1240	002° 2400	GP 3.00° TCH 40	
1.7		3.6 NM	8.5 NM		
CATEGORY		A	B	C	D
LPV	DA	931-1 250 (300-1)			NA
LNAV/ VNAV	DA	947-1 266 (300-1)			NA
LNAV	MDA	1020-1 339 (400-1)			NA
CIRCLING	1120-1 422 (500-1)	1380-1 682 (700-1)	1440-2¼ 742 (800-2¼)	NA	