

WAAS CH 70527 W18A	APP CRS 182°	Rwy Idg TDZE Apt Elev	4000 698 698
--	------------------------	-----------------------------	---

RNAV (GPS) RWY 18

JASPER COUNTY (RZL)

RNP APCH.

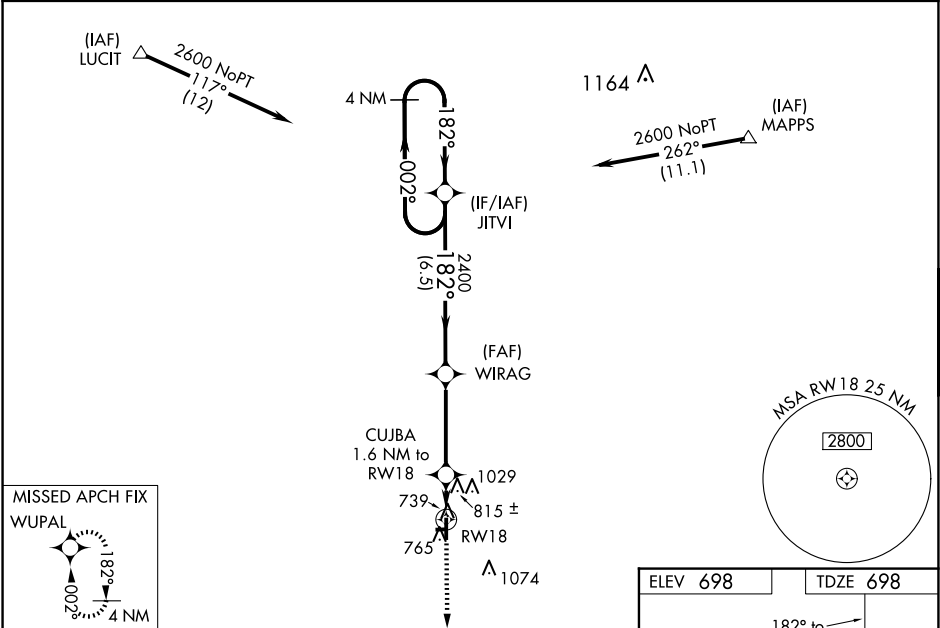
T

A

Baro-VNAV NA when using Knox altimeter setting. For uncompensated Baro-VNAV systems LNAV/VNAV NA below -22°C or above 54°C. When local altimeter setting not received, use Knox altimeter setting: increase LPV DA to 1026 feet and increase visibility all Cats ¼ SM; increase LNAV/VNAV DA to 1174 feet and visibility all Cats ½ SM; increase all MDAs 80 feet and LNAV visibility Cat C ½ SM, and Circling visibility Cat C ¼ SM. Rwy 18 helicopter visibility reduction below 1 SM NA. Circling NA to Rwy 9 and 27.

MISSED APPROACH:
Climb to 2600 direct WUPAL and hold.

AWOS-3P 119.175	CHICAGO CENTER 132.5 284.7	UNICOM 122.8 (CTAF) 0
---------------------------	--------------------------------------	--



4 NM Holding Pattern		VGSI and RNAV glidepath not coincident (VGSI Angle 3.00/TCH 27).		2600	WUPAL
JIVTI		WIRAG		*LNAV only.	
2600		2400		CUJBA 1.6 NM to RWY18	
GP 3.00° TCH 40		2400		*1240	
6.5 NM		3.6 NM		1.6 NM	
CATEGORY	A	B	C	D	
LPV DA	948-1 250 (300-1)				NA
LNAV/VNAV DA	1096-1 3/8 398 (400-1 3/8)				NA
LNAV MDA	1080-1 382 (400-1)		1080-1 1/8 382 (400-1 1/8)		NA
CIRCLING	1120-1 422 (500-1)	1380-1 682 (700-1)	1440-2 1/4 742 (800-2 1/4)		NA

