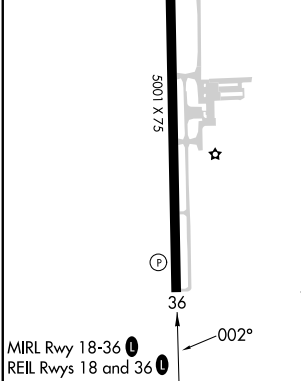
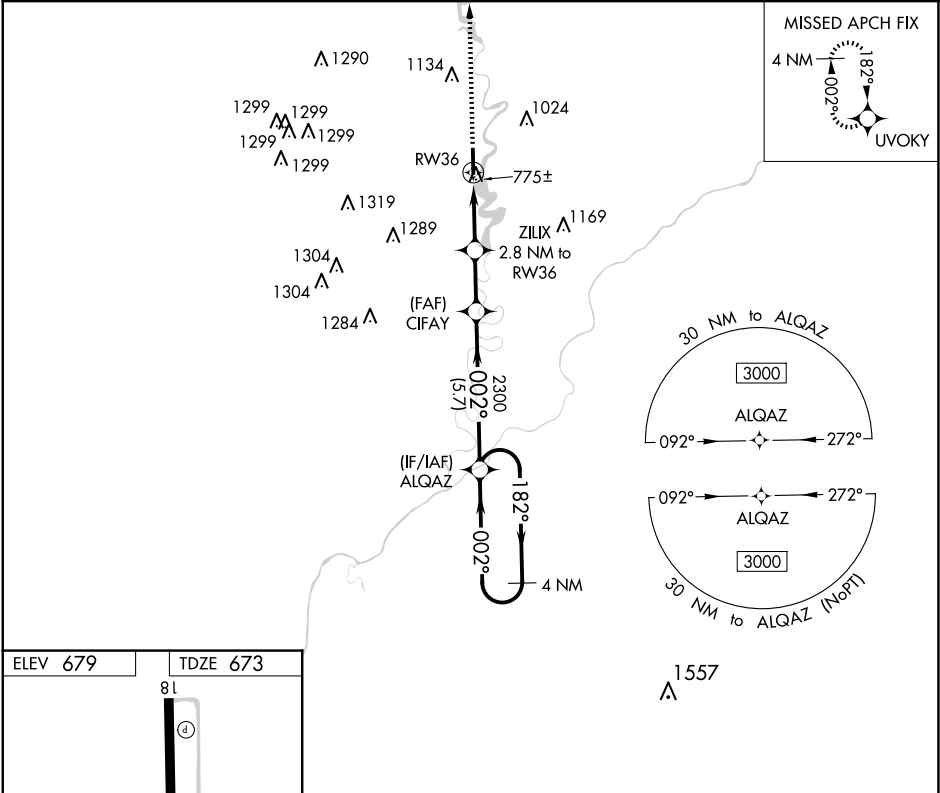


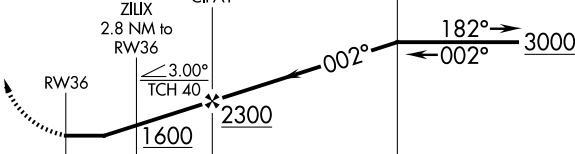

APP CRS	Rwy Idg	5001
002°	TDZE	673
	Apt Elev	679

RNAV (GPS) RWY 36
WHITE COUNTY (MCX)

<div><div></div><div></div></div> <div>DME/DME RNP-0.3 NA. Straight-in Rwy 36 NA at night, Circling Rwy 36 NA at night. Rwy 36 helicopter visibility reduction below 1 SM NA.</div>	MISSED APPROACH: Climb to 3000 direct UVOKY and hold.
---	---

AWOS-3P 124.05	GRISSEM APP CON ★ 123.85 291.675	UNICOM 122.8 (CTAF) 0
-------------------	-------------------------------------	--------------------------



3000 ↑	UVOKY ✦	VGSI and descent angles not coincident (VGSI Angle 4.00/TCH 25).		4 NM Holding Pattern	
 <p>The diagram illustrates a flight path starting from RW36 (Runway 36). The path is shown as a series of connected line segments. Key points and data include:<ul style="list-style-type: none">RW36: The starting point, indicated by a dashed line and a solid line.ZILUX: A point 2.8 NM to RW36. The altitude here is 1600.CIFAY: A point further along the path. The altitude here is 2300.ALQAZ: A point further along the path. The altitude here is 3000.Distances: The path is divided into segments of 2.8 NM, 2.2 NM, and 5.7 NM.Angles: The path has a 3.00° TCH 40 angle at ZILUX and a 002° angle at ALQAZ.Holding Pattern: A 4 NM holding pattern is shown at the end of the path, with a 182° turn and a 002° turn.</p>					
CATEGORY	A	B	C	D	
LNAV MDA	1040-1 367 (400-1)				
 CIRCLING	1200-1 521 (600-1)	1340-1 661 (700-1)	1500-2½ 821 (900-2½)	1500-2¾ 821 (900-2¾)	