

APP CRS	Rwy Idg	3515
091°	TDZE	737
	Apt Elev	737

# RNAV (GPS) RWY 9

## CPT BEN SMITH AIRFIELD/MONROE CITY (K52)

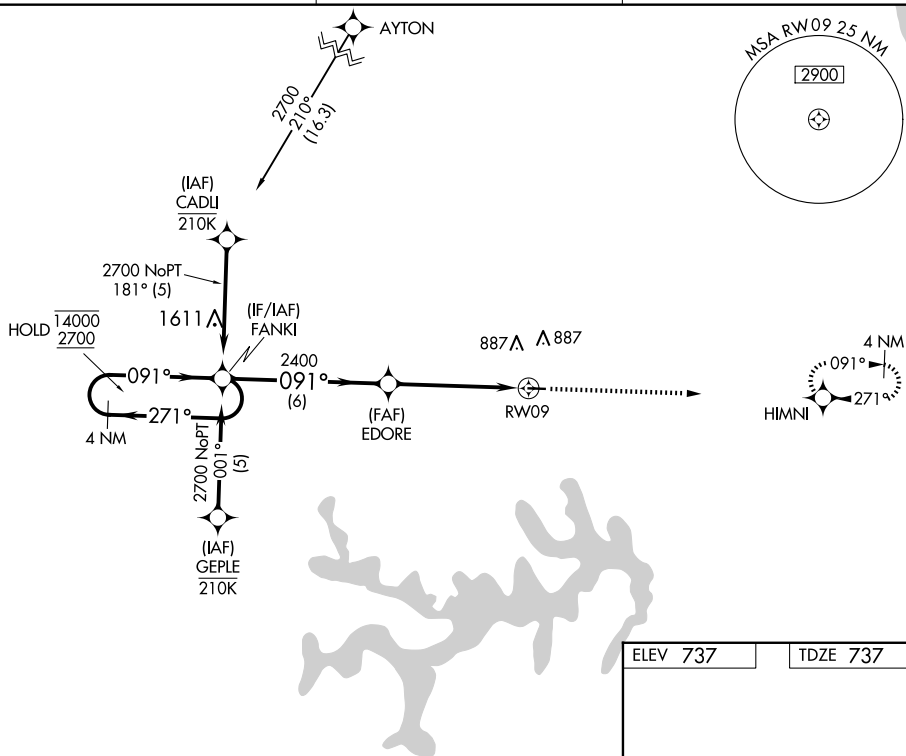
RNP APCH - GPS.

**T** Procedure NA at night. Rwy 9 helicopter visibility reduction  
**A** NA below 1 SM NA. Use Quincy, IL altimeter setting.

**MISSED APPROACH:** Climb to 2600 direct HIMNI and hold.

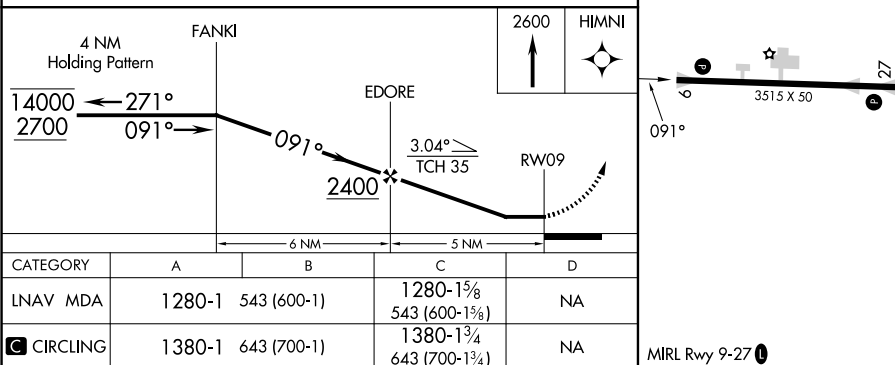
UIN ASOS  
121.425

KANSAS CITY CENTER  
126,225 317,775

UNICOM  
122.8 (CTAF) **L**

ELEV 737

TDZE 737



MONROE CITY, MISSOURI

Orig-C 15JUN23

CPT BEN SMITH AIRFIELD/MONROE CITY (K52)

39°38'N-91°44'W

RNAV (GPS) RWY 9