

24305

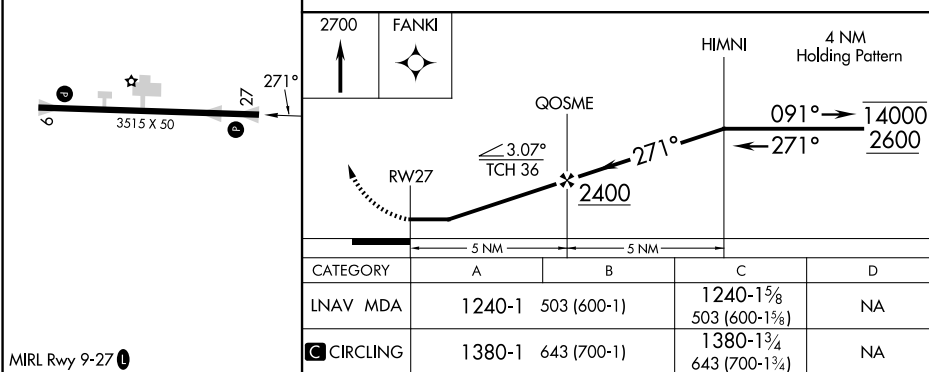
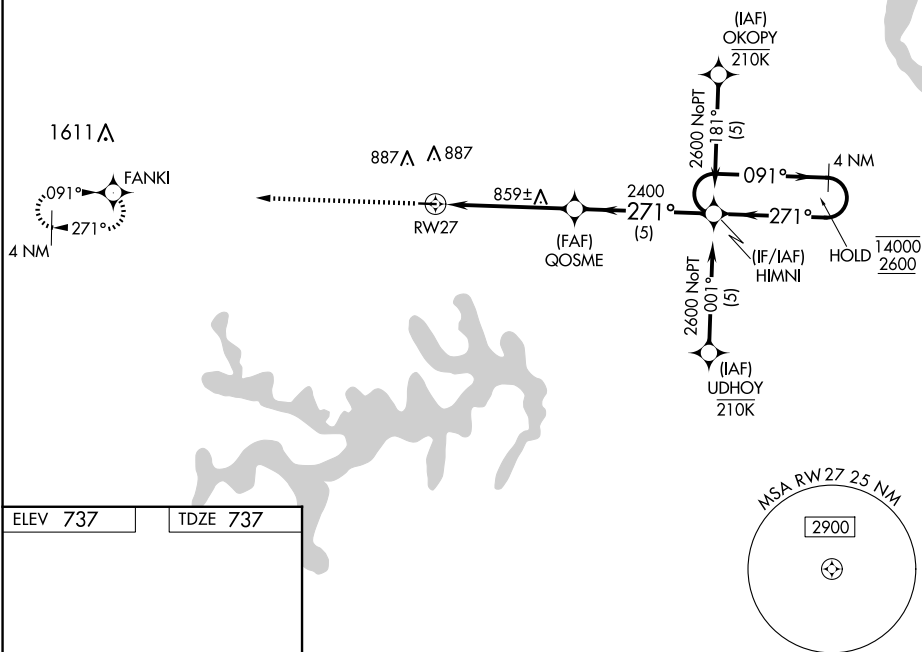
RNAV (GPS) RWY 27

CPT BEN SMITH AIRFIELD/MONROE CITY (K52)

MISSED APPROACH: Climb to 2700 direct FANKI and hold.

T Procedure NA at night. Rwy 27 helicopter visibility reduction
A NA below 1 SM NA. Use Quincy, IL altimeter setting.

KANSAS CITY CENTER
126.225 317.775

UNICOM
122.8 (CTAF) **L**

CPT BEN SMITH AIRFIELD/MONROE CITY (K52)
39°38'N-91°44'W **PNNAV (GPS) RWY 27**

RNAV (GPS) RWY 27

NC-3, 07 AUG 2025 to 04 SEP 2025