

APP CRS	Rwy Idg	4239
054°	TDZE	821
	Apt Elev	833

RNAV (GPS) RWY 5

WATERTOWN MUNI (RYV)

RNP APCH.

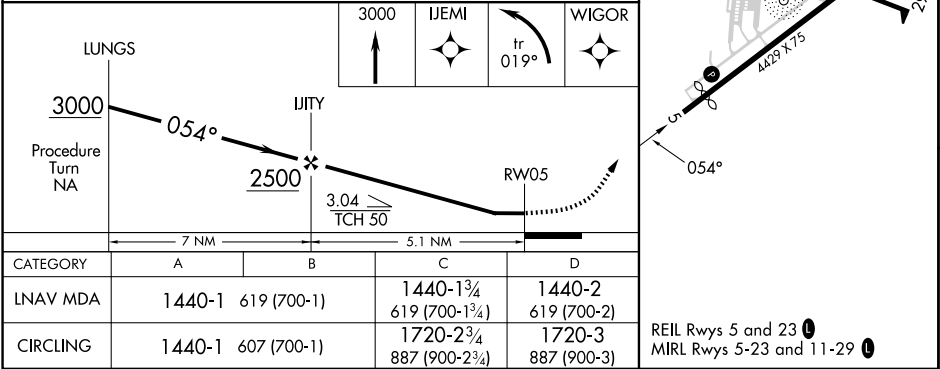
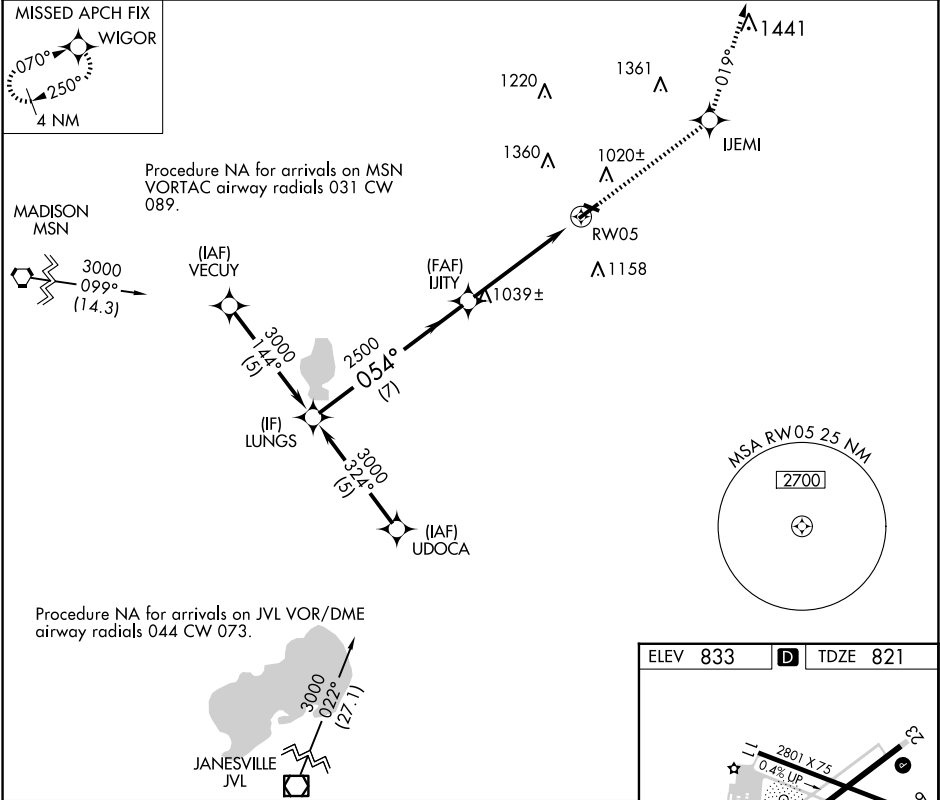
▼

Rwy 5 helicopter visibility reduction below ¾ SM NA. When local altimeter setting not received, use Dodge County altimeter setting and increase all MDAs 60 feet, increase LNAV Cat C visibility ½ SM. Circling Rwy 23 NA at night.

MISSED APPROACH:

Climb to 3000 direct IJEMI and left turn on 019° track to WIGOR and hold.

AWOS-3 119.975	MADISON APP CON ★ 119.15 343.7	UNICOM 122.8 (CTAF) ①
-------------------	-----------------------------------	--------------------------



EC-3, 07 AUG 2025 to 04 SEP 2025

EC-3, 07 AUG 2025 to 04 SEP 2025