

APP CRS	Rwy Idg	2801
293°	TDZE	833
	Apt Elev	833

RNAV (GPS) RWY 29

WATERTOWN MUNI (RYV)

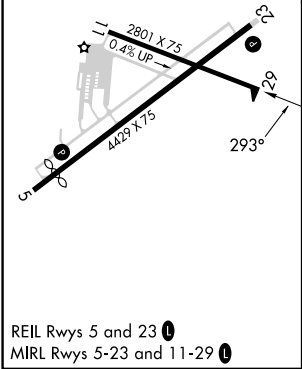
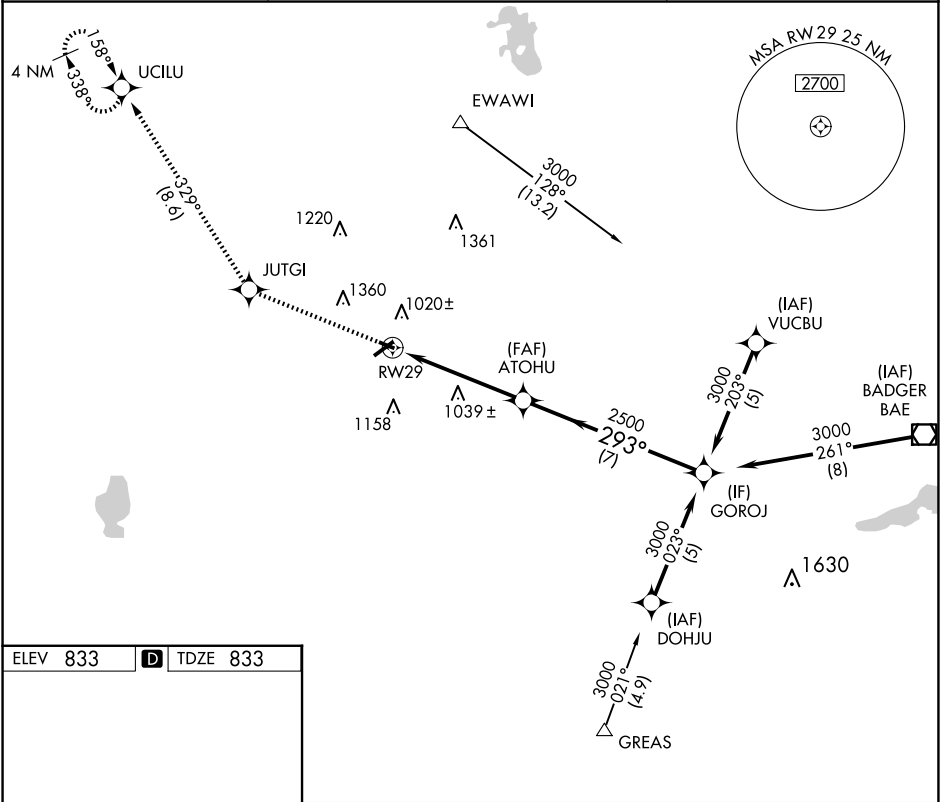
⚠

⚠

Circling to Rwy 23 NA at night. Rwy 29 helicopter visibility reduction below 1 SM NA. DME/DME RNP-0.3 NA. When local altimeter setting not received, use Dodge County altimeter setting and increase all MDAs 60 feet and LNAV visibility Cat C/D ½ SM.

MISSED APPROACH: Climb to 3000 direct JUTGI and right turn via 329° track to UCILU and hold.

AWOS-3 119.975	MADISON APP CON ★ 119.15 343.7	UNICOM 122.8 (CTAF) 0
-------------------	-----------------------------------	--------------------------



3000	JUTGI	tr 329°	UCILU	
				GOROJ
			ATOHU	3000
			RW29	2500
			3.04° TCH 40	
			5 NM	7 NM
CATEGORY	A	B	C	D
LNAV MDA	1400-1 567 (600-1)	1400-1 567 (600-1)	1400-1 567 (600-1)	1400-1 567 (600-1)
CIRCLING	1400-1 567 (600-1)	1440-1 607 (700-1)	1720-2 887 (900-2)	1720-3 887 (900-3)

EC-3, 07 AUG 2025 to 04 SEP 2025

EC-3, 07 AUG 2025 to 04 SEP 2025