

APP CRS
113°

Rwy Idg
TDZE
833

Apt Elev
833

RNAV (GPS) RWY 11

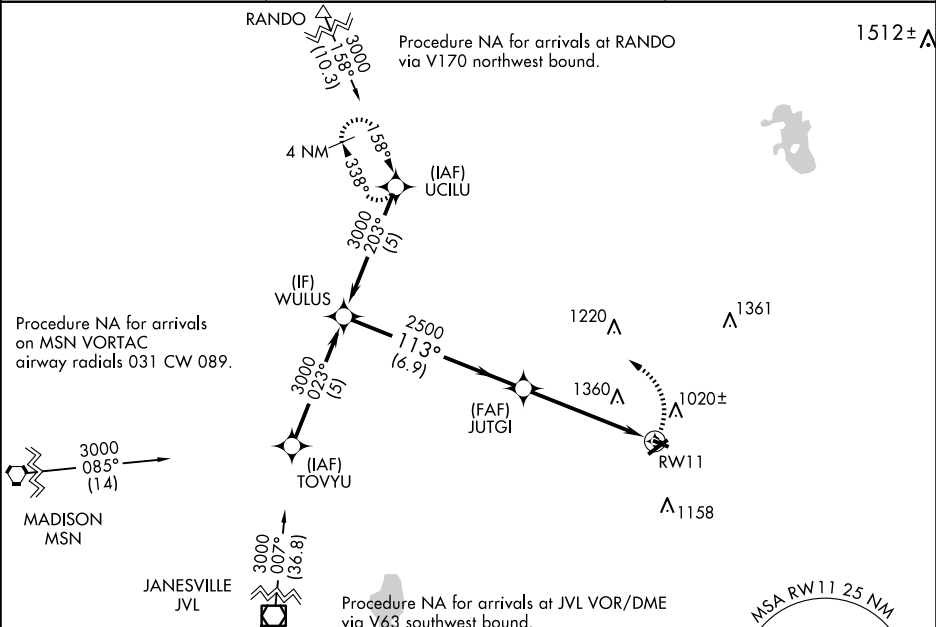
WATERTOWN MUNI (RYV)

RNP APCH.

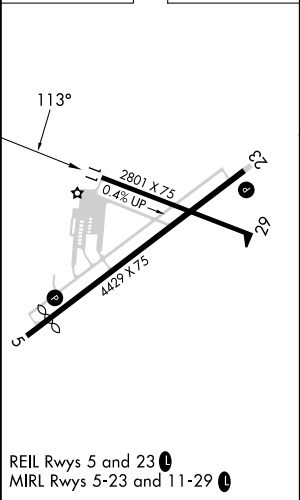
When local altimeter setting not received, use Dodge County altimeter setting and increase all MDAs 60 feet and Circling visibility Cat A ¼ SM. VDP NA when using Dodge County altimeter setting. Circling Rwy 23 NA at night.

MISSED APPROACH: Climbing left turn to 3000 direct UCILU and hold.

AWOS-3 119.975	MADISON APP CON ★ 119.15 343.7	UNICOM 122.8 (CTAF) 0
--------------------------	--	---------------------------------



ELEV 833	D	TDZE 833
----------	----------	----------



3000

UCILU

2.4 NM to RW11

3.04 TCH 40

6.9 NM

WULUS

3000

Procedure Turn NA

JUTGI

2500

113°

CATEGORY	A	B	C	D
LNAV MDA	1640-1 807 (900-1)	1640-1¼ 807 (900-1¼)	1640-2½ 807 (900-2½)	1720-3 887 (900-3)
CIRCLING	1640-1 807 (900-1)	1640-1¼ 807 (900-1¼)	1720-2¾ 887 (900-2¾)	1720-3 887 (900-3)