

NDB RYV

371

APP CRS

254°

Rwy Idg

4429

TDZE

823

Apt Elev

833

NDB RWY 23

WATERTOWN MUNI (RYV)

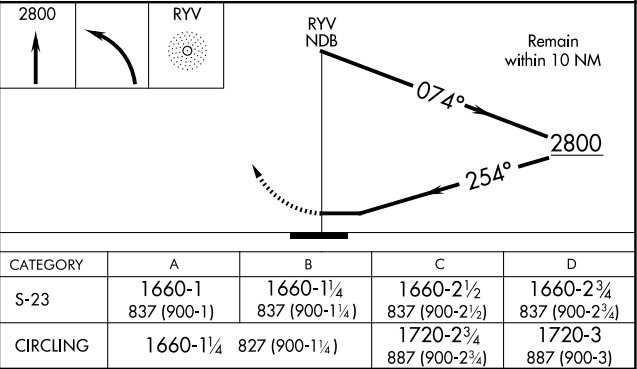
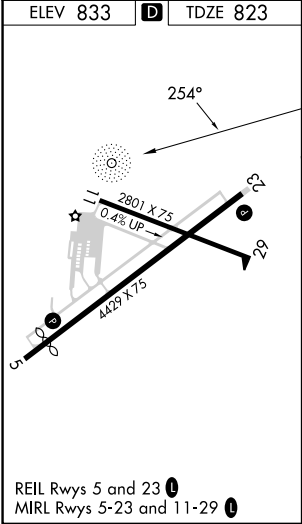
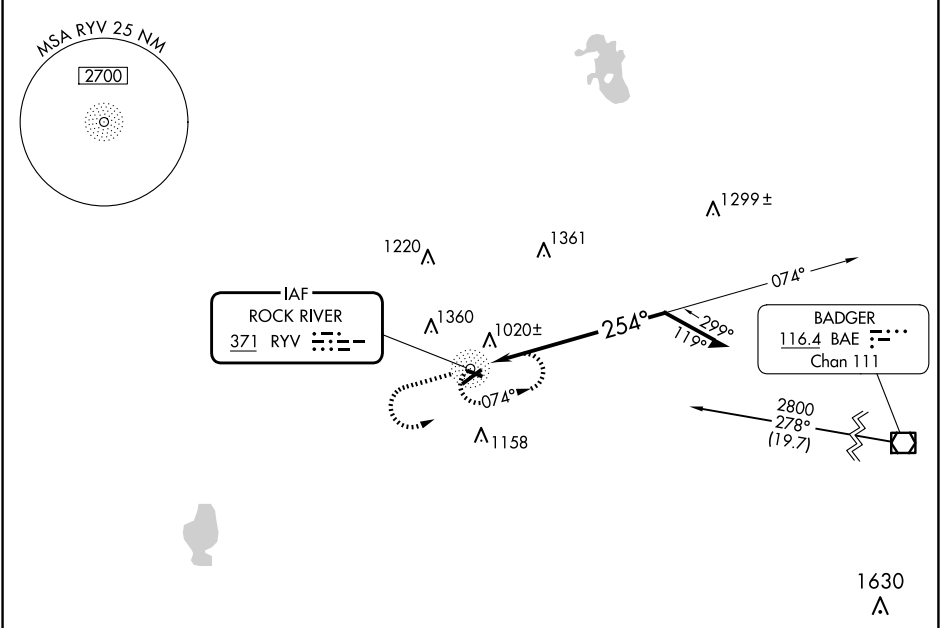
▼

▲NA

Rwy 23 helicopter visibility reduction below 1 SM NA. When local altimeter setting not received, use Dodge County altimeter setting and increase all MDA 60 feet, and increase visibility Cat A, C and D ¼ mile. Straight-In Rwy 23 NA at night, Circling Rwy 23 NA at night.

MISSED APPROACH: Climb to 2800 then left turn direct RYV NDB and hold.

AWOS-3 119.975	MADISON APP CON ★ 119.15 343.7	UNICOM 122.8 (CTAF) 0
-------------------	-----------------------------------	--------------------------



EC-3, 07 AUG 2025 to 04 SEP 2025

EC-3, 07 AUG 2025 to 04 SEP 2025