

PUNTA GORDA, FLORIDA

AL-6178 (FAA)

25107

WAAS CH 93507 W33A	APP CRS 335°	Rwy Idg 6015 TDZE 23 Apt Elev 26
--	------------------------	---

RNAV (GPS) RWY 33
PUNTA GORDA (PGD)

RNP APCH.



For uncompensated Baro-VNAV systems, LNAV/VNAV NA below 2°C or above 54°C.

MISSED APPROACH: Climb to 2000 direct APZUL and hold.

ATIS 135.675	FORT MYERS APP CON ★ 127.05 306.2	PUNTA GORDA TOWER ★ 121.0 (CTAF) 0	GND CON 119.55	CLNC DEL 119.55	CLNC DEL 127.05 (When twr closed)	UNICOM 122.975
------------------------	---	--	--------------------------	---------------------------	--	--------------------------

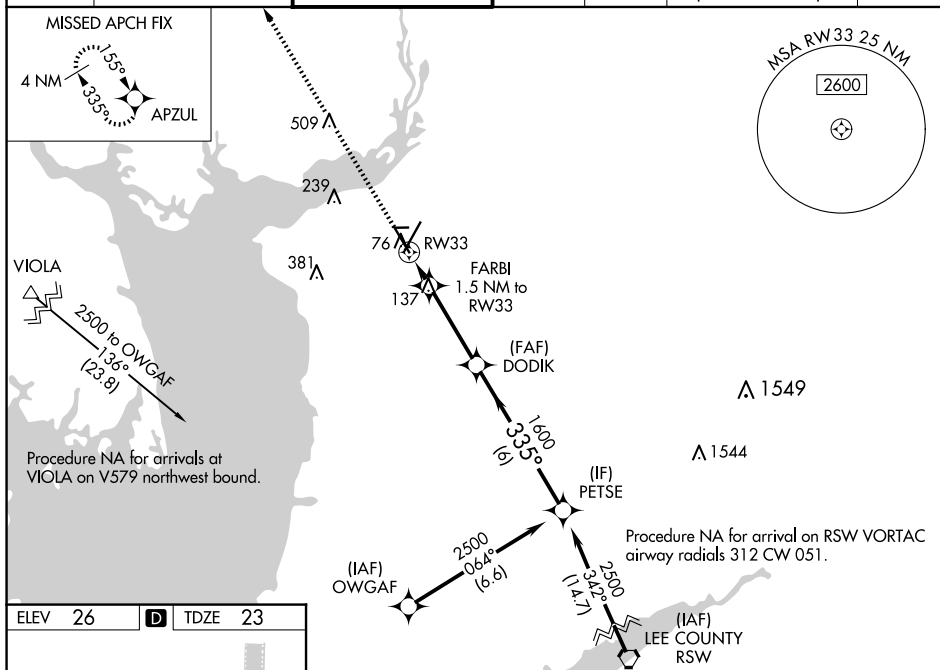


Diagram illustrating the Petse VOR/DME station and its associated navigation aids. The diagram shows the Petse VOR/DME station at the top right, with a 2500 MHz frequency. It indicates distances to other stations: 1.6 NM to DODIK, 3.3 NM to FARBI, and 6 NM to RW33. The diagram also shows the Petse VOR/DME station's location relative to the Petse VOR/DME station. The diagram includes a table of navigation aids and their frequencies.

CATEGORY	A	B	C	D
LPV DA	273-3/4	250 (300-3/4)		
LNNAV/VNAV DA	288-7/8	265 (300-7/8)		
LNNAV MDA	400-1	377 (400-1)		
C CIRCLING	460-1 434 (500-1)	580-1 554 (600-1)	600-1 1/2 574 (600-1 1/2)	740-2 1/4 714 (800-2 1/4)

SE-3, 07 AUG 2025 to 04 SEP 2025