

WAAS

CH **45905**

W22A

APP CRS

215°

Rwy Idg

7193

TDZE

26

Apt Elev

26

RNAV (GPS) RWY 22

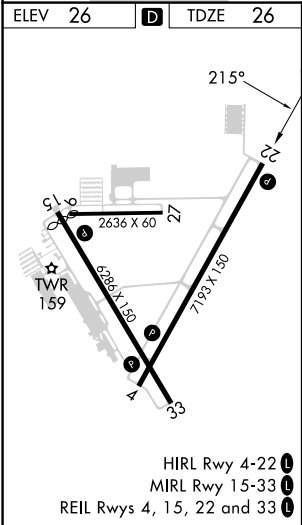
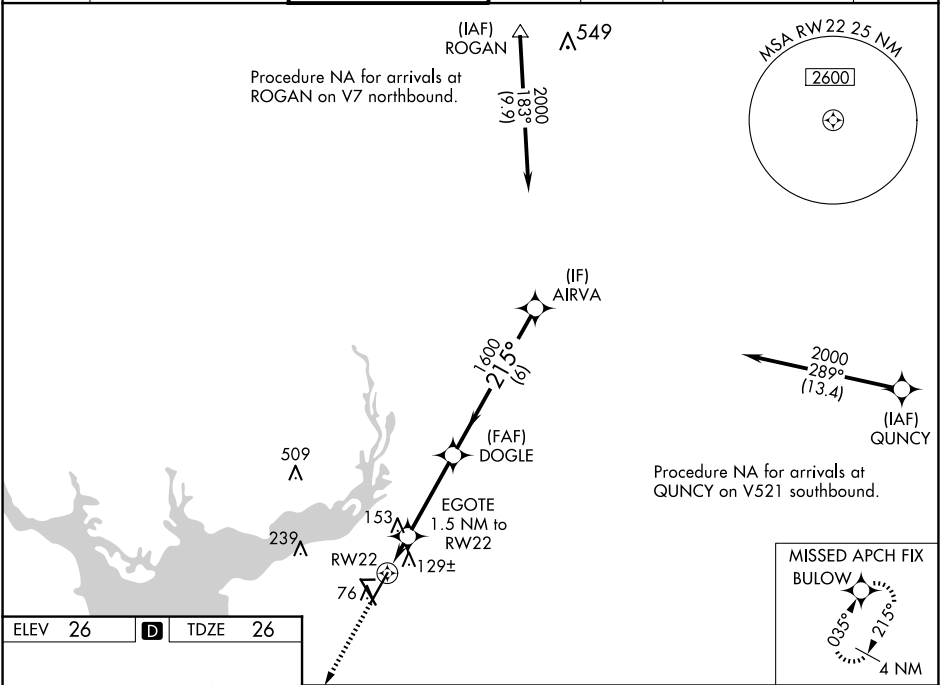
PUNTA GORDA (PGD)

RNP APCH.

Baro-VNAV NA when using Page Fld altimeter setting. For uncompensated Baro-VNAV systems, LNAV/VNAV NA below 1°C or above 54°C. When local altimeter setting not received, use Page Fld altimeter setting and increase LPV DA to 276, LNAV/VNAV DA to 360, and all MDAs 60 feet; increase LNAV Cats C and D visibility ¼ SM, and Circling Cats C and D visibility ¼ SM.

MISSED APPROACH: Climb to 2000 direct BULOW and hold.

ATIS 135.675	FORT MYERS APP CON ★ 127.05 306.2	PUNTA GORDA TOWER ★ 121.0 (CTAF) 0	GND CON 119.55	CLNC DEL 119.55	CLNC DEL 127.05 (When twr closed)	UNICOM 122.975
------------------------	---	--	--------------------------	---------------------------	--	--------------------------



ELEV 26		D		TDZE 26	
2000		BULOW		VGSI and descent angles not coincident (VGSI Angle 3.00/TCH 31).	
*LNAV only.		EGOTE 1.5 NM to RW22		DOGLE 1600	
RW22		540*		215°	
1.5 NM		3.3 NM		6 NM	
CATEGORY	A	B	C	D	
LPV DA	226-3/4		200 (200-3/4)		
LNAV/VNAV DA	310-1		284 (300-1)		
LNAV MDA	420-1	394 (400-1)	420-1 1/8	394 (400-1 1/8)	
CIRCLING	460-1 434 (500-1)	580-1 554 (600-1)	600-1 1/2 574 (600-1 1/2)	740-2 1/4 714 (800-2 1/4)	