

WAAS Ch 42817 W23A	APP CRS 228°	Rwy Idg 5002 TDZE 1013 Apt Elev 1013
--	------------------------	---

RNAV (GPS) RWY 23

PICKENS COUNTY (LQK)

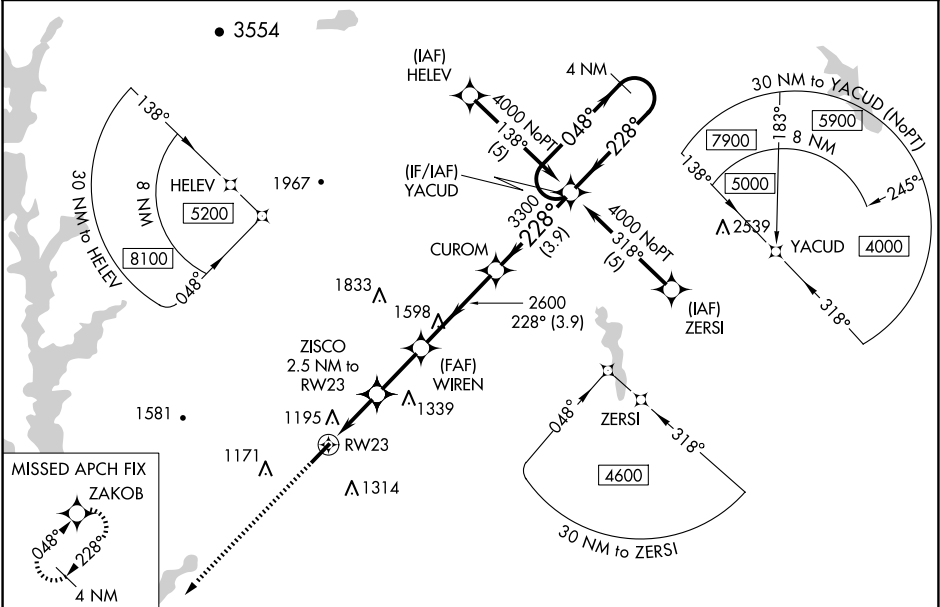
▼

▲ NA

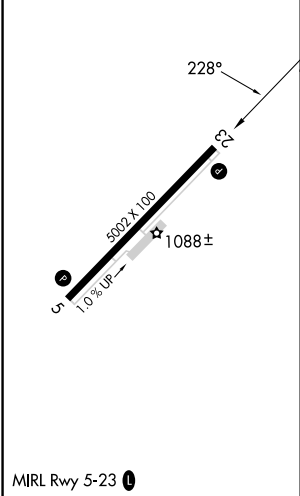
For uncompensated Baro-VNAV systems, LNAV/VNAV NA below -17°C (2°F) or above 46°C (114°F). DME/DME RNP-0.3 NA. When local altimeter setting not received, use Clemson altimeter setting and increase LPV DA to 1356 feet and visibility all Cats ¼ SM; increase LNAV/VNAV DA to 1594 feet; increase all MDAs 60 feet and LNAV Cat C and Circling Cat D visibility ½ SM, increase LNAV Cat D visibility ½ SM. Baro-VNAV NA when using Clemson altimeter setting. VDP NA with Clemson altimeter setting.

MISSED APPROACH:
Climb to 3000 direct ZAKOB and hold.

AWOS-3 120.0	GREER APP CON ★ 118.8 270.275	UNICOM 122.8 (CTAF) 0
------------------------	---	---------------------------------



ELEV 1013	TDZE 1013
-----------	-----------



3000	ZAKOB	VGSI and RNAV glidepath not coincident (VGSI Angle 3.00/TCH 26).				4 NM Holding Pattern
* LNAV only.	ZISCO 2.5 NM to RW23	WIREN 2600	CUROM	YACUD	048° → 4000	
	* 1.5 NM to RW23	1860*	2600	3300	← 228°	GP 3.00° TCH 45
	1.5 NM	1 NM	2.3 NM	3.9 NM	3.9 NM	
CATEGORY	A	B	C	D		
LPV DA	1310-1 297 (300-1)					
LNAV/VNAV DA	1548-2 535 (600-2)					
LNAV MDA	1500-1	487 (500-1)	1500-1½ 487 (500-1½)	1500-1½ 487 (500-1½)		
CIRCLING	1560-1 547 (600-1)	1620-1 607 (700-1)	1620-1½ 607 (700-1½)	1780-2½ 767 (800-2½)		