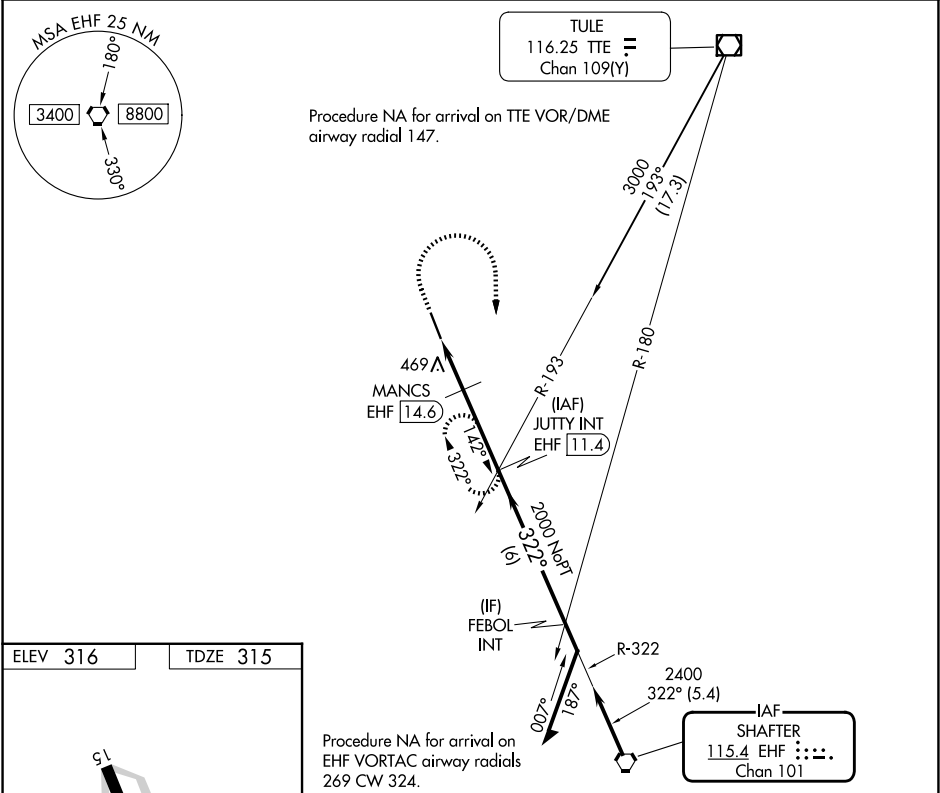


VORTAC EHF <b>115.4</b> Chan <b>101</b>	APP CRS <b>322°</b>	Rwy Ldg TDZE <b>315</b> Apt Elev <b>316</b>
---	------------------------	---

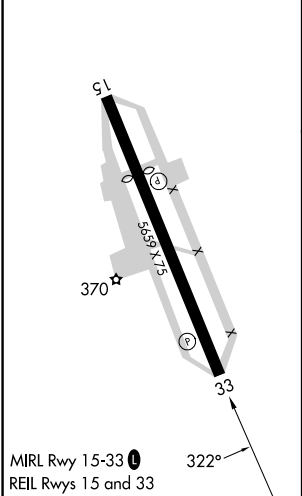
VOR RWY 33  
DELANO MUNI (DLO)

DME required.	MISSED APPROACH: Climb to 1200 then climbing right turn to 2400 on EHF VORTAC R-322 to JUTTY INT/EHF 11.4 DME and hold. Continue climb-in-hold to 2400.
▼ Circling NA southwest of Rwy 15-33. ⚠ When local altimeter setting not received, procedure NA.	

AWOS-3P <b>119.55</b>	BAKERSFIELD APP CON★ <b>118.9</b>	UNICOM <b>122.8</b> (CTAF) 0
--------------------------	--------------------------------------	---------------------------------



ELEV <b>316</b>	TDZE <b>315</b>
-----------------	-----------------



1200	2400	JUTTY INT	JUTTY INT EHF 11.4	VGSI and descent angles not coincident.
↑	EHF R-322			
	MANCS EHF 14.6	EHF 16.6	3.00° TCH 40	142°
	1000	2000	2400	322°
	2 NM	3.1 NM	6 NM	
CATEGORY	A	B	C	D
S-33	860-1	545 (600-1)	860-1 5/8	545 (600-1 5/8)
CIRCLING	860-1	544 (600-1)	860-1 5/8	960-2
			544 (600-1 5/8)	644 (700-2)

SW-3, 07 AUG 2025 to 04 SEP 2025

SW-3, 07 AUG 2025 to 04 SEP 2025