

APP CRS
324°

Rwy Ldg
TDZE
Apt Elev

5659
315
316

RNAV (GPS) RWY 33
DELANO MUNI (DLO)

RNP APCH - GPS.

⚠

Circling NA southwest of Rwy 15-33.

⚠

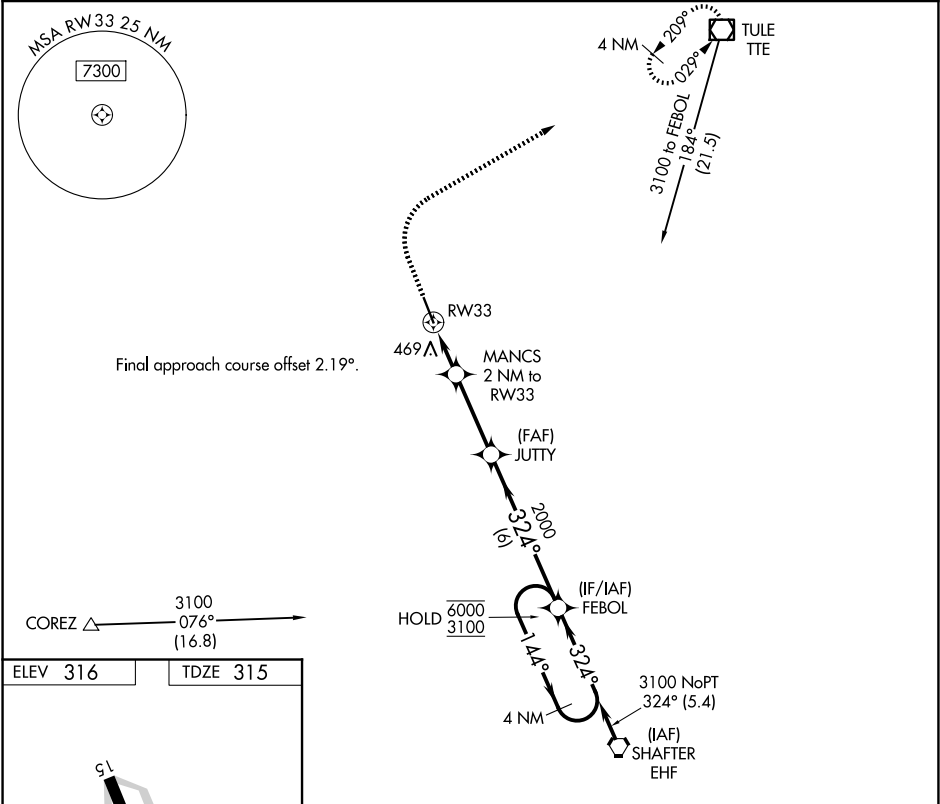
When local altimeter setting not received, procedure NA.

MISSED APPROACH: Climb to 800 then climbing right turn to 3100 direct TTE VOR/DME and hold.

AWOS-3P
119.55

BAKERSFIELD APP CON ★
118.9

UNICOM
122.8 (CTAF) 0



ELEV 316

TDZE 315

800

3100

TTE

VGSI and descent angles not coincident.

MANCS

2 NM to RW33

JUTTY

FEBOL

4 NM

Holding Pattern

1.2 NM

0.9 NM

3.1 NM

6 NM

1000

2000

324°

144°

3100

6000

CATEGORY	A	B	C	D
LNAV MDA	720-1	405 (500-1)	720-1½	405 (500-1½)
CIRCLING	760-1 444 (500-1)	780-1 464 (500-1)	820-1½ 504 (600-1½)	960-2 644 (700-2)