

WAAS  
CH **99518**  
**W17A**

APP CRS  
**175°**

Rwy Idg  
TDZE **699**  
Apt Elev **699**

**RNAV (GPS) RWY 17**

DURANT RGNL/EAKER FLD (DUA)

RNP APCH.

▼

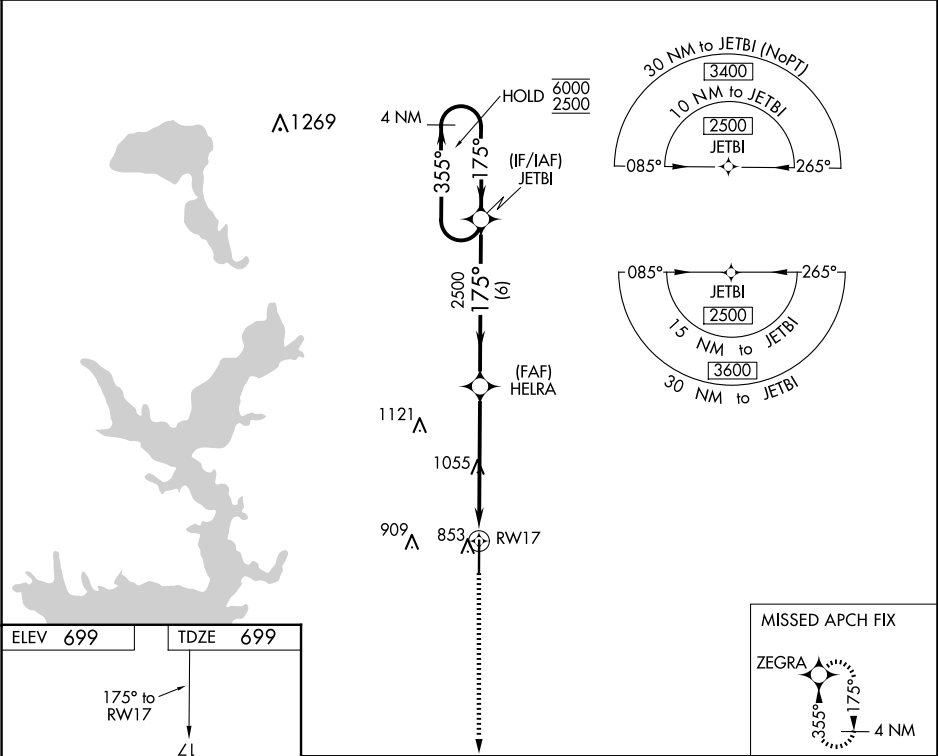
▲

Inop table does not apply to LPV and LNAV Cat C. For uncompensated Baro-VNAV systems, LNAV/VNAV NA below -16°C or above 54°C. For inop ALS, increase LNAV/VNAV Cat A/B visibility to 1 ½ SM.

ODALS

MISSED APPROACH: Climb to 2500 direct ZEGRA and hold.

AWOS-3 <b>124.175</b>	FORT WORTH CENTER <b>124.75 323.0</b>	UNICOM <b>123.05 (CTAF) 0</b>
--------------------------	--	----------------------------------



ELEV 699

TDZE 699

175° to RWY 17

35

2500 ZEGRA

\*LNAV only.

HELRA 2500

JETBI 4 NM Holding Pattern

RWY 17

\*1.8 NM to RWY 17

2500

1.8 NM 3.7 NM 6 NM

GP 3.00° TCH 43

CATEGORY	A	B	C	D
LPV DA	899-¾	200 (200-¾)		NA
LNAV/VNAV DA	1133-1⅞	434 (500-1⅞)		NA
LNAV MDA	1320-¾ 621 (700-¾)	1320-1¾ 621 (700-1¾)		NA