

VORTAC MSN	APP CRS	Rwy Idg	4001
108.6	254°	TDZE	928
Chan 23		Apt Elev	928

VOR RWY 28

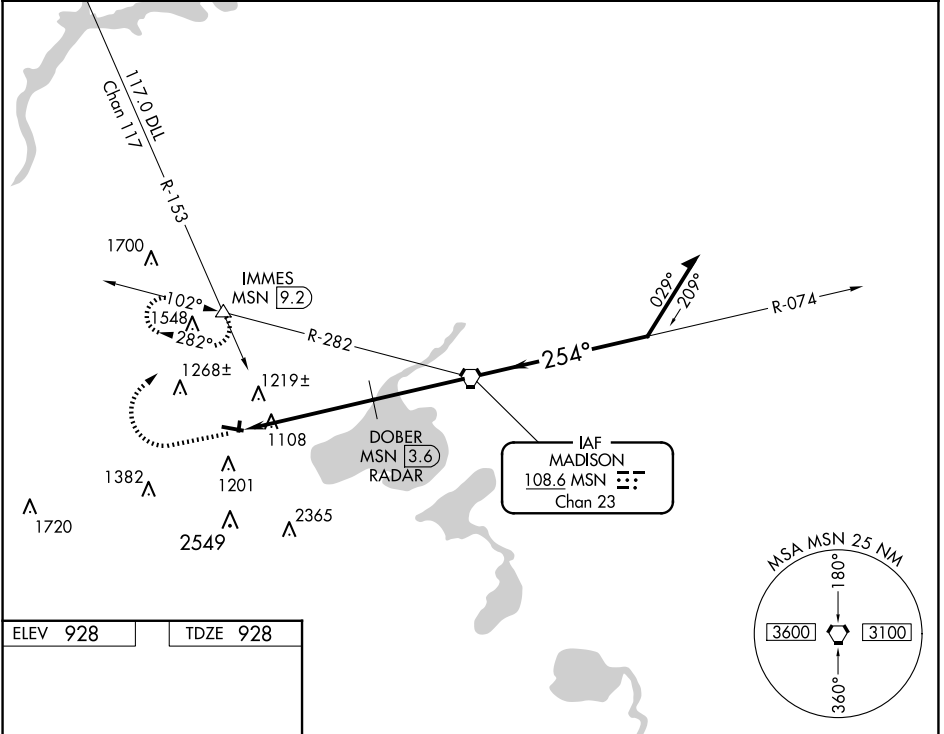
MIDDLETON MUNI/MOREY FLD (C29)

⚠

When local altimeter setting not received, use Dane County Rgnl/Truax Fld altimeter setting and increase all MDAs 40 feet and S-28 visibility Cat C ⅓ SM, and Circling visibility Cat C ¼ SM. RADAR or DME required. Circling NA to Rwys 1 and 19. Rwy 28 helicopter visibility reduction below 1 SM NA. Straight-in Rwy 28 NA at night, Circling Rwy 28 NA at night.

MISSED APPROACH: Climb to 2000 then climbing right turn to 3500 on heading 020° and MSN R-282 to IMMES INT/9.2 DME and hold.

AWOS-3 118.675	MADISON APP CON★ 135.45 343.7	UNICOM 123.0 (CTAF) 0
-------------------	----------------------------------	--------------------------



ELEV 928	TDZE 928
MIRL Rwy 10-28 0	
REIL Rwys 10 and 28 0	
FAF to MAP 8.4 NM	
Knots	60 90 120 150 180
Min:Sec	8:24 5:36 4:12 3:22 2:48

2000	3500	MSN R-282	IMMES	VGSI and descent angles not coincident (VGSI Angle 4.00/TCH 36).
↑	hdg 020°		△	MSN VORTAC
Remain within 10 NM				
CATEGORY	A	B	C	D
S-28	1500-1	572 (600-1)	1500-1½ 572 (600-1½)	NA
CIRCLING	1560-1 632 (700-1)	1640-1 712 (800-1)	1660-2 732 (800-2)	NA