

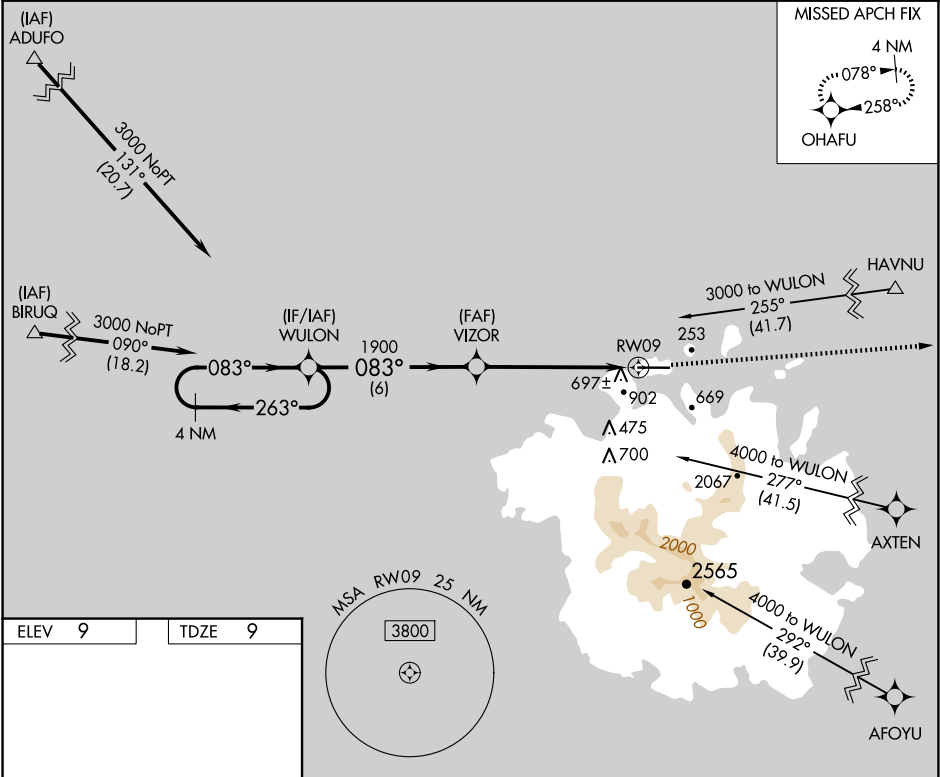
| | | |
|---------|----------|------|
| APP CRS | Rwy Idg | 6600 |
| 083° | TDZE | 9 |
| | Apt Elev | 9 |

RNAV (GPS) X RWY 9
POHNPEI INTL (PNI)(PTPN)

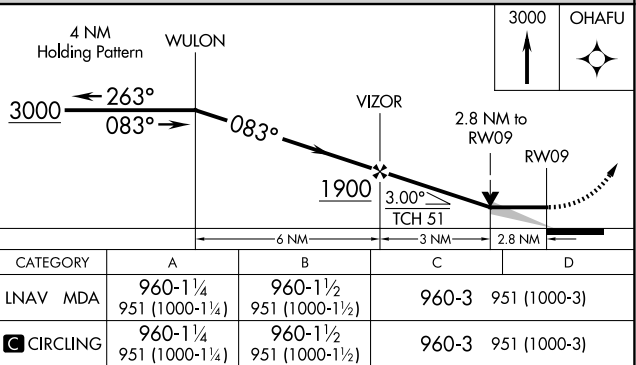
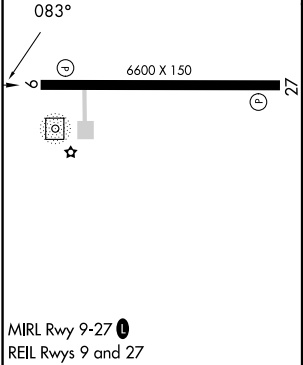
Obtain local altimeter setting on CTAF; when not received, procedure NA. Circling NA south of Rwy 9-27. Procedure NA at night except by prior arrangement for runway lights. DME/DME RNP-0.3 NA. No controlled airspace below 5500. Ships with maximum height of 150 feet MSL may traverse Pohnpei Channel 400 feet off approach end of runway, closing airport at times.

MISSED APPROACH:
Climb to 3000 direct
OHAFU and hold.

POHNPEI RADIO
123.6 (CTAF) 0



| | |
|--------|--------|
| ELEV 9 | TDZE 9 |
|--------|--------|



| CATEGORY | A | B | C | D |
|-----------|-------------------------|-------------------------|-------|--------------|
| LNNAV MDA | 960-1¼ 951 (1000-1¼) | 960-1½ 951 (1000-1½) | 960-3 | 951 (1000-3) |
| CIRCLING | 960-1¼ 951 (1000-1¼) | 960-1½ 951 (1000-1½) | 960-3 | 951 (1000-3) |

PAC, 07 AUG 2025 to 02 OCT 2025

PAC, 07 AUG 2025 to 02 OCT 2025