

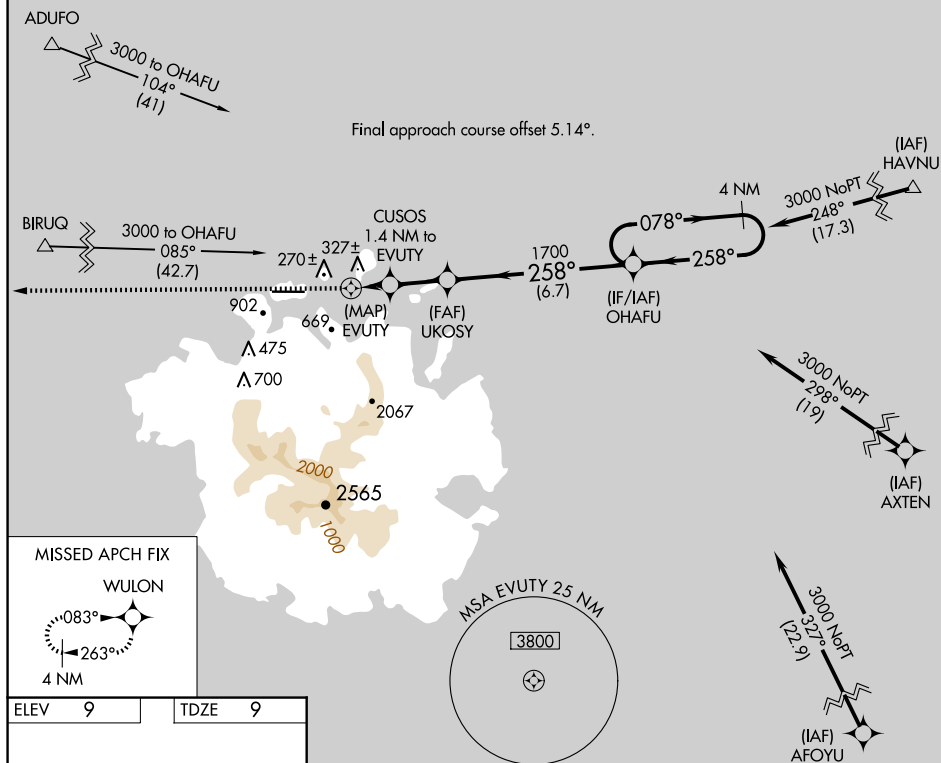
APP CRS 258°	Rwy Idg TDZE Apt Elev	6600 9 9
------------------------	-----------------------------	-------------------------------------

RNAV (GPS) RWY 27
POHNPEI INTL (PNI)(PTPN)

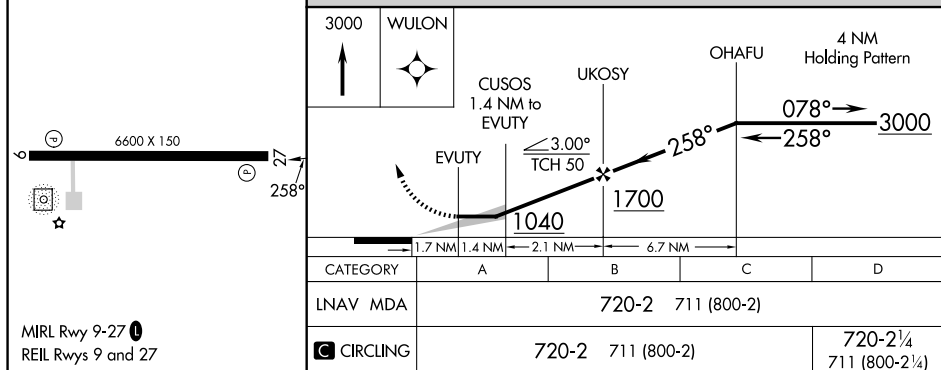
▼ Obtain local altimeter setting on CTAF; when not received, procedure NA. Circling NA south of Rwy 9-27. Procedure NA at night except by prior arrangement for runway lights. DME/DME RNP-0.3 NA. No controlled airspace below 5500. Ships with maximum height of 150 feet MSL may traverse Pohorai Channel 400 feet off approach end of runway 9, closing airport at times.

MISSED APPROACH:
Climb to 3000 direct
WULON and hold.

POHNPEI RADIO
123.6 (CTAF) **L**



ELEV	9		TDZE	9
------	---	--	------	---



POHNPEI ISLAND, FM
Amdt 2 27APR17

06°59'N-158°13'E

POHNPEI INTL (PNI)(PTPN)
RNAV (GPS) RWY 27