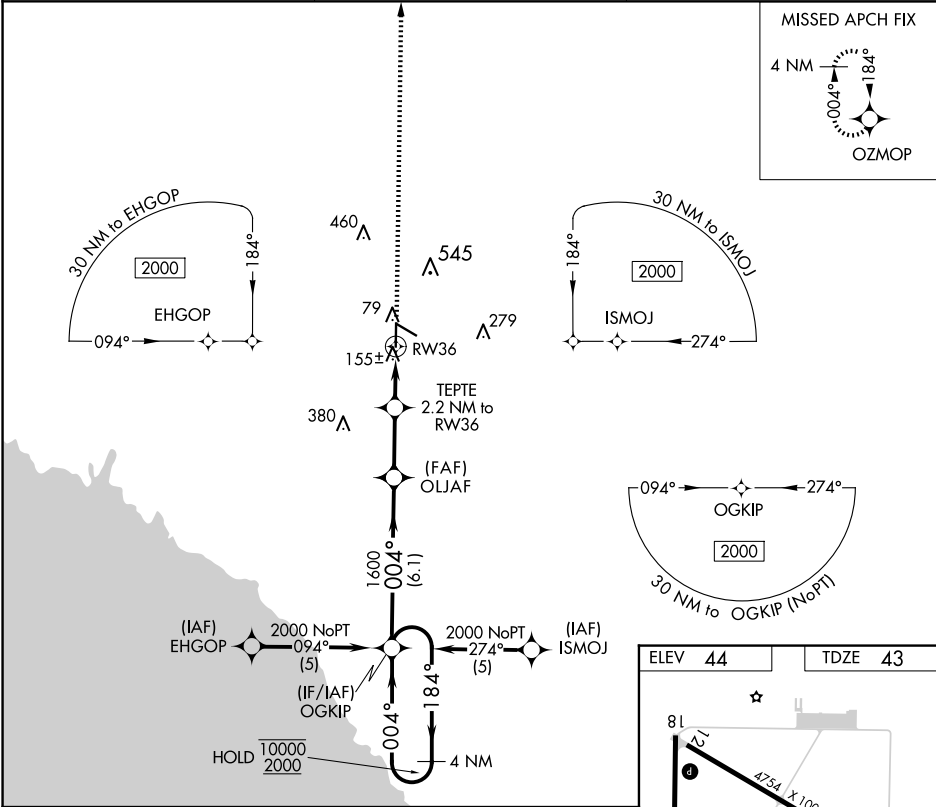


APP CRS	Rwy Idg	5013
004°	TDZE	43
	Apt Elev	44

RNAV (GPS) RWY 36
PERRY-FOLEY (F'PY)

RNP APCH.	MISSED APPROACH: Climb to 2000 direct OZMOP and hold.
<div><div>▼</div><div>▲</div></div> <div>Circling Rwy 12 NA at night. Procedure NA at night. Rwy 36 helicopter visibility reduction below 1 SM NA.</div>	

AWOS-3PT 118.375	JACKSONVILLE CENTER 127.8 352.0	UNICOM 122.8 (CTAF) 0
---------------------	------------------------------------	--------------------------



VGSi and descent angle not coincident (VGSi Angle 4.00/TCH 33).				
4 NM Holding Pattern				
10000 ← 184° 2000 → 004°				
OGKIP				
OLJAF				
TEPTE 2.2 NM to RW36				
3.04° TCH 45				
RW36				
6.1 NM				
2.5 NM				
2.2 NM				
CATEGORY	A	B	C	D
LNAV MDA	460-1	417 (500-1)	460-1¼	417 (500-1¼)
CIRCLING	640-1	596 (600-1)	860-2½ 816 (900-2½)	860-2¾ 816 (900-2¾)

