

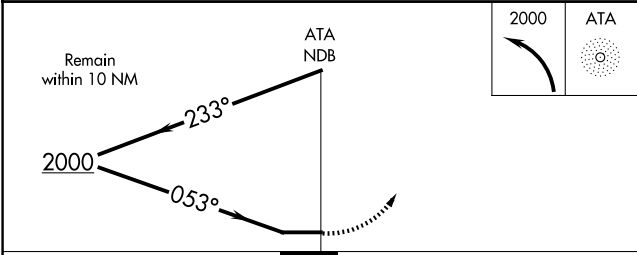
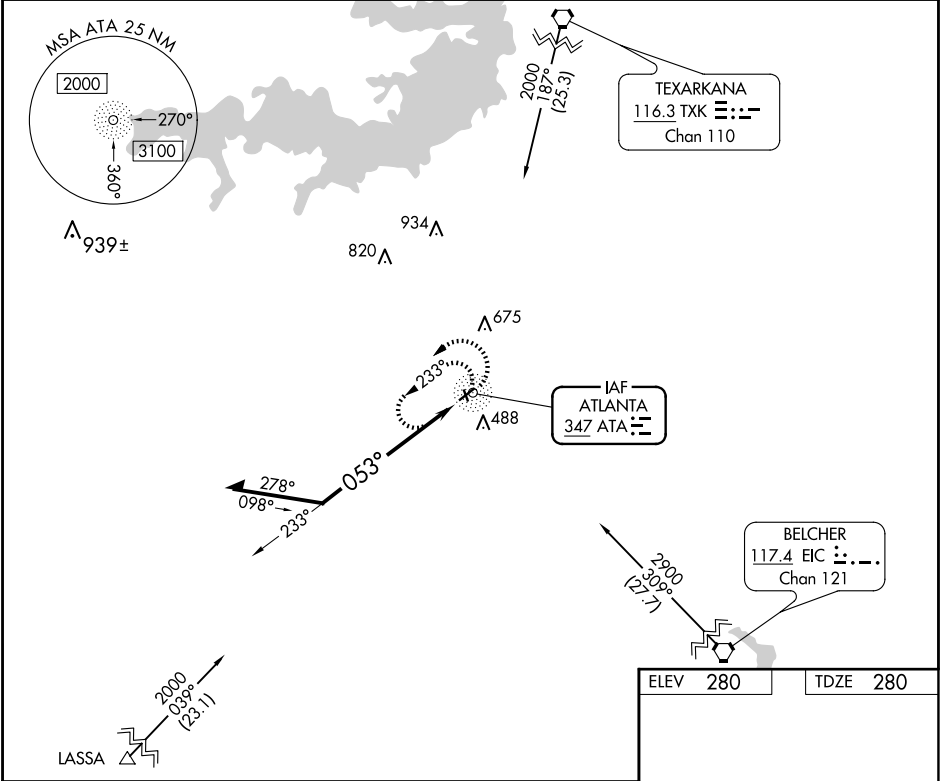
NDB ATA	APP CRS	Rwy Idg	3800
347	053°	TDZE	280
		Apt Elev	280

NDB RWY 5

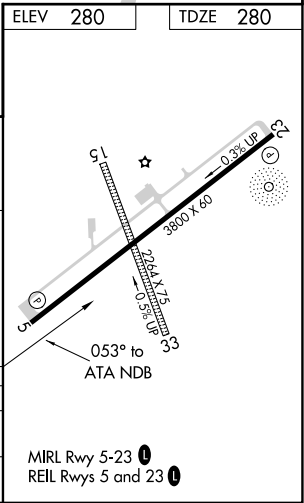
HALL-MILLER MUNI (ATA)

▼ ▲ NA	Helicopter visibility reduction below 1 SM NA. Use Texarkana altimeter setting, when not received use Mount Pleasant altimeter setting and increase all MDA 40 feet and all Cat B visibility ¼ mile. Procedure NA at night.	MISSED APPROACH: Climbing left turn to 2000 in ATA NDB holding pattern.
-----------	---	--

AWOS-3 118.250	TXK ASOS 120.2	FORT WORTH CENTER 123.925 269.475	CTAF 122.9 0
-------------------	-------------------	--------------------------------------	-----------------



CATEGORY	A	B	C	D
S-5	1 220-1¼	940 (1000-1¼)	NA	
CIRCLING	1 220-1¼	940 (1000-1¼)	NA	



SC-2, 07 AUG 2025 to 04 SEP 2025

SC-2, 07 AUG 2025 to 04 SEP 2025