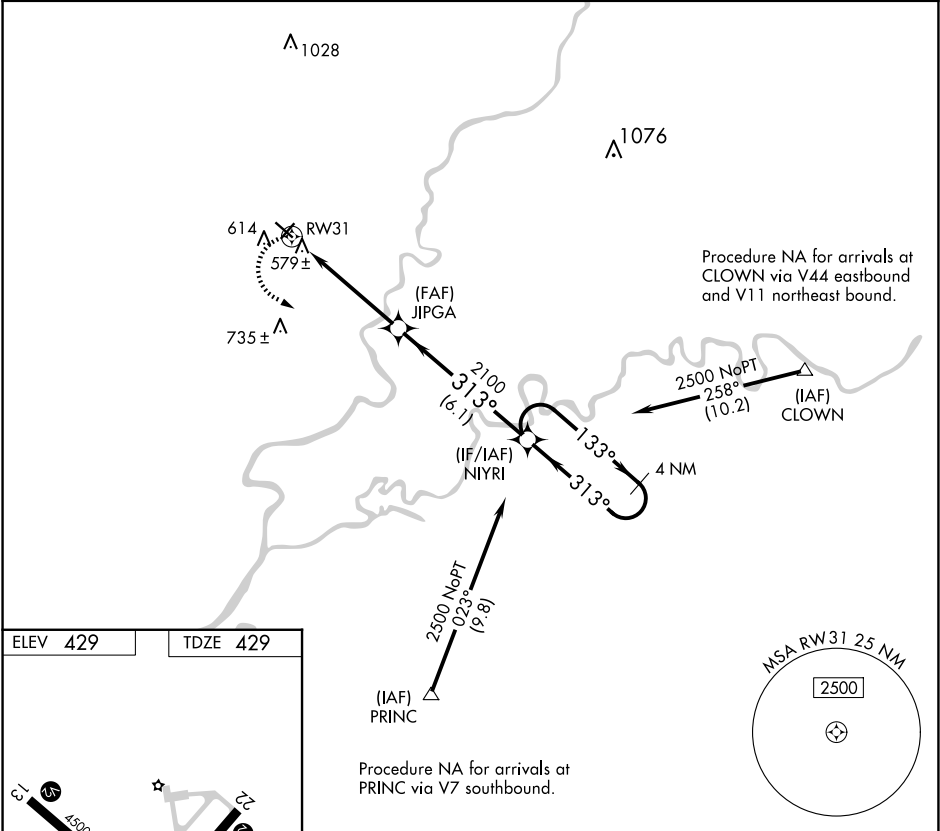


APP CRS 313°	Rwy Idg	4500
	TDZE	429
	Apt Elev	429
RNAV (GPS) RWY 31		
MOUNT CARMEL MUNI (AJG)		

RNP APCH.		MISSED APPROACH: Climbing left turn to 2500 direct NIYRI and hold.
▼ ▲ NA	When local altimeter setting not received, use Lawrenceville altimeter setting and increase all MDA 40 feet and increase LNAV Cat D visibility ¼ mile.	
AWOS-3 134.9	EVANSVILLE APP CON★ 125.6 343.7	UNICOM 122.7 (CTAF) 0



<p>REIL Rws 4, 13, 22 and 31 MIRL Rws 4-22 and 13-31</p>	 2500		VGSI and descent angles not coincident (VGSI Angle 3.00/TCH 25).		4 NM Holding Pattern	
	 NIYRI		<p>JIPGA RW31 2100 313° 133° 2500 313° 3.04° TCH 45 5 NM 6.1 NM</p>			
	CATEGORY		A		B	
	LNAV MDA		840-1 411 (500-1)		840-1¼ 411 (500-1¼)	
	CATEGORY		C		D	
	LNAV MDA		840-1 411 (500-1)		840-1¼ 411 (500-1¼)	

EC-3, 07 AUG 2025 to 04 SEP 2025

EC-3, 07 AUG 2025 to 04 SEP 2025