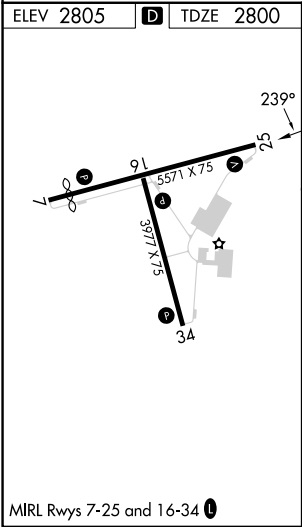
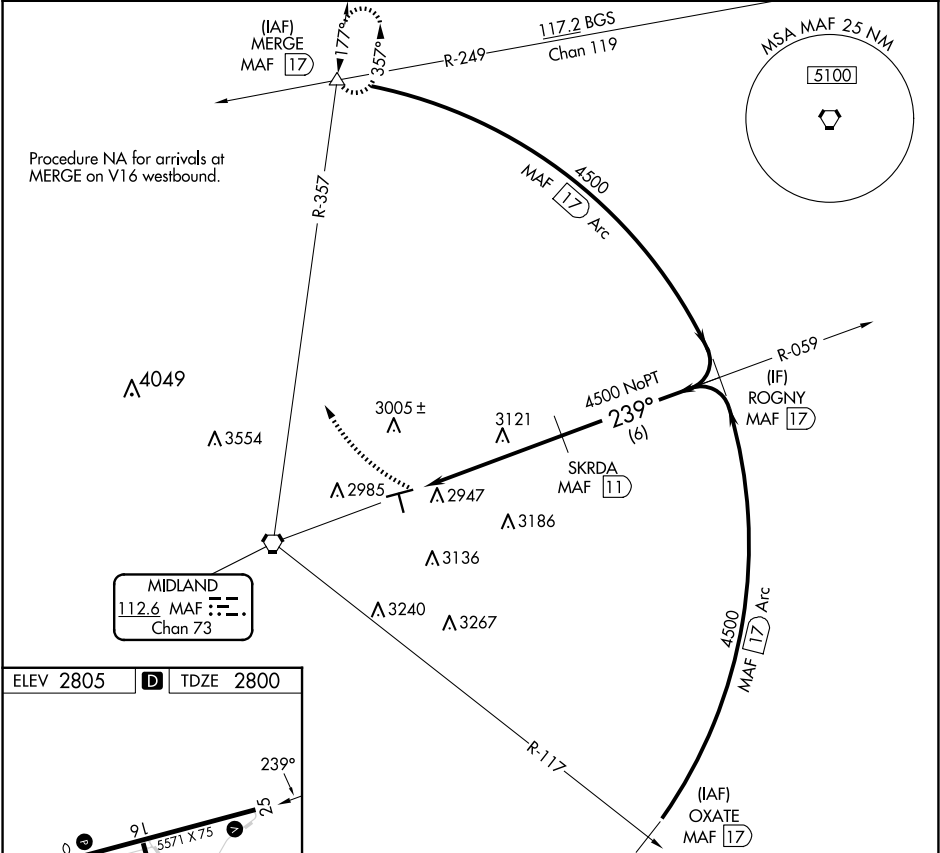


VORTAC MAF 112.6 Chan 73	APP CRS 239°	Rwy Idg TDZE 2800 Apt Elev 2805
--	------------------------	---

VOR RWY 25
MIDLAND AIRPARK (MDD)

DME required. RADAR required for procedure entry at OXATE.		MISSED APPROACH: Climbing right turn to 4500 on MAF VORTAC R-357 to MERGE INT/17 DME and hold.	
Rwy 25 helicopter visibility reduction below ¾ SM NA.			
AWOS-3 118.125	MIDLAND APP CON ★ 124.6 290.4	CLNC DEL 121.8	UNICOM 122.7 (CTAF) 0



<div>4500 MERGE △ MAF R-357</div>		<div>SKRDA MAF 11</div>		<div>ROGNY MAF 17</div>	
<div>MAF 5.3</div>		<div>MAF 7</div>		<div>239° 4500</div>	
<div>MAF 5.3</div>		<div>2.75° TCH 47</div>		<div>VGSI and descent angles not coincident (VGSI Angle 3.00/TCH 53).</div>	
<div>1.7</div>		<div>4 NM</div>		<div>6 NM</div>	
CATEGORY	A	B	C	D	
S-25	3400-1	600 (600-1)	3400-1¾	600 (600-1¾)	
CIRCLING	3400-1	595 (600-1)	3440-1¾ 635 (700-1¾)	3700-3 895 (900-3)	